

# ETF Industry Flows & Performance

## Small Caps Lead the Way

By: **Bipan Rai, MD and Head of ETF and Alternatives Strategy at BMO GAM**

**Saakshi Mehta, VP, ETF and Alternatives Strategy at BMO GAM**

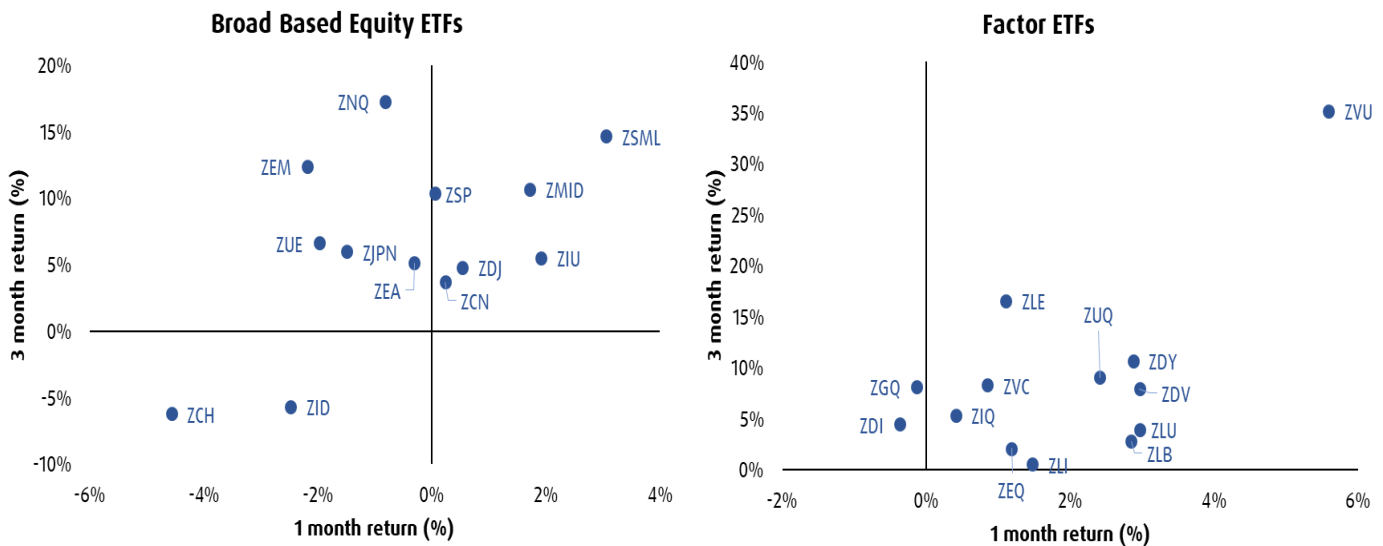
For more: [BMO ETF Dashboard](#) | [The Basis Point](#)

**Summary** (as of June 12<sup>th</sup> at 9am):

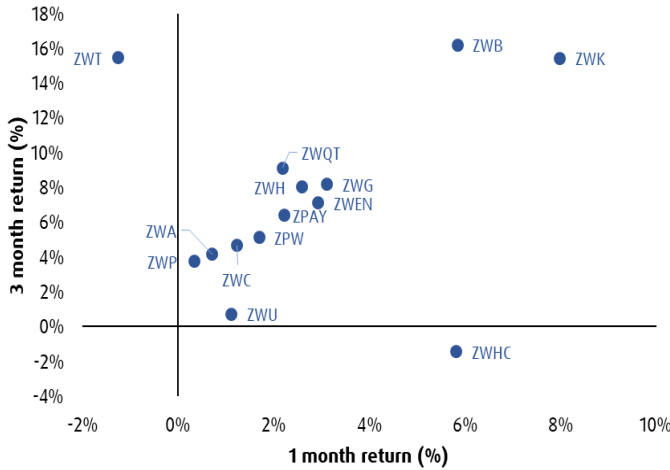
- **Small Caps lead the way:** In the US, small caps (ZSML) are outperforming mid caps and large caps on both 1m and 3m basis. Emerging markets have pared some of their earlier gains, with China (ZCH) and India (ZID) still sitting in negative territory.
- **Banks reclaim income leadership:** ZWB and ZWK have moved firmly into the top-right quadrant, overtaking ZWT on 1M returns. That signals renewed appetite for bank-heavy income strategies across the US and Canada.
- **Tech still dominates flows:** US sector flows remain narrow, with Tech leading by a wide margin on both absolute inflows and z-score momentum. Financials and Health Care also saw positive inflows, but most other sectors were flat to negative, highlighting that investor demand remains concentrated.

## Performance Charts – Standard Performance Data Included Below

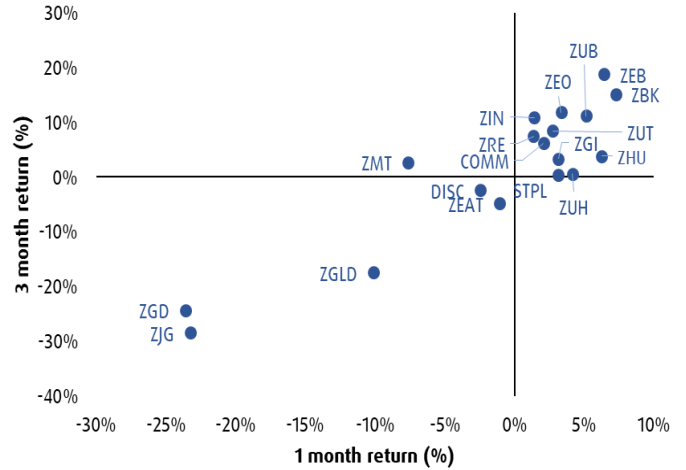
Data as of 4 pm June 11, 2026



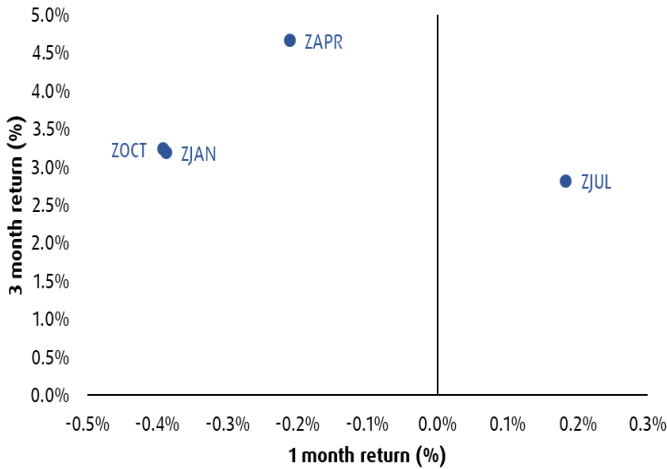
**Enhanced Income ETFs**



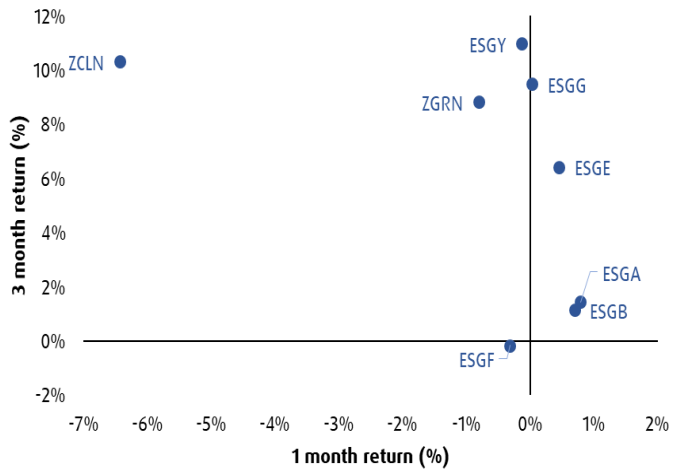
**Sector ETFs**



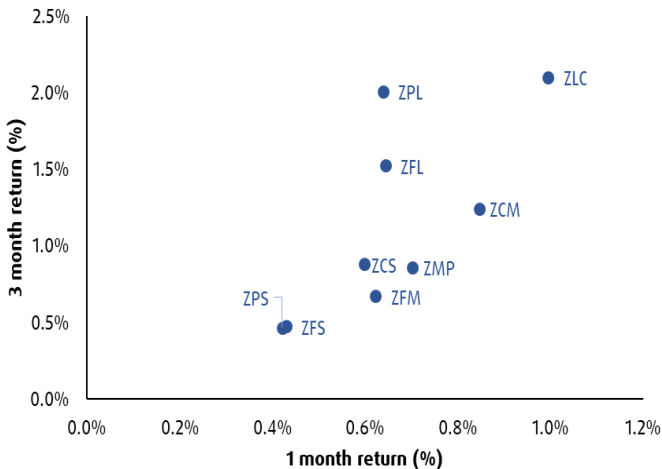
**Structured Outcome**



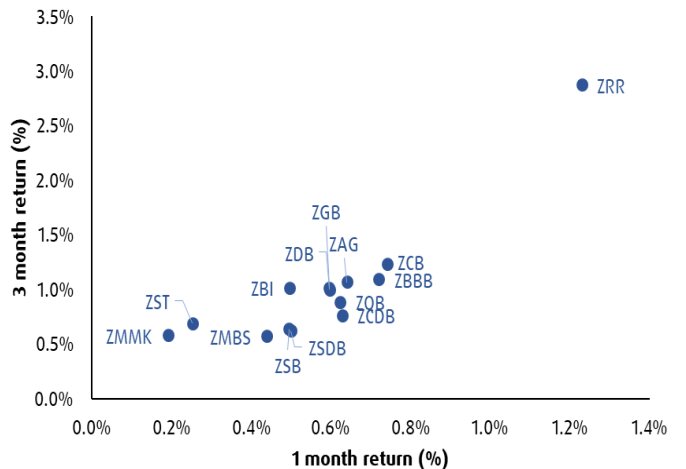
**Sustainable Investing ETFs**



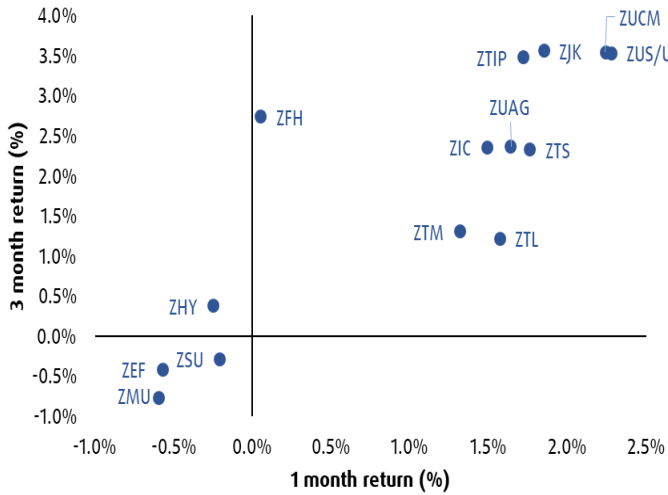
**Canadian Precise Market**



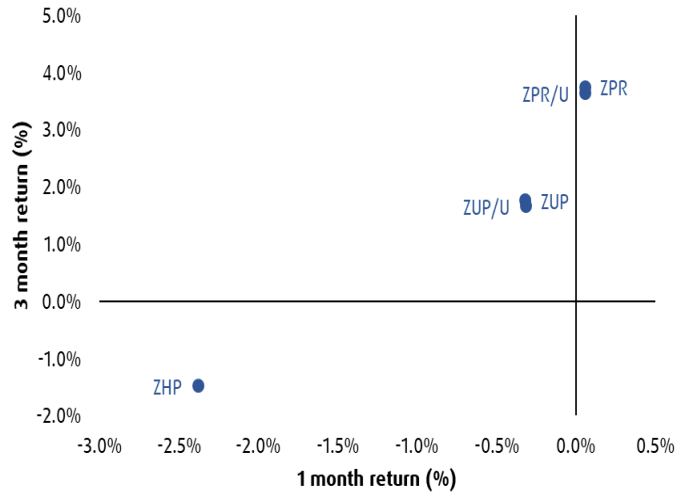
**Canadian Fixed Income**



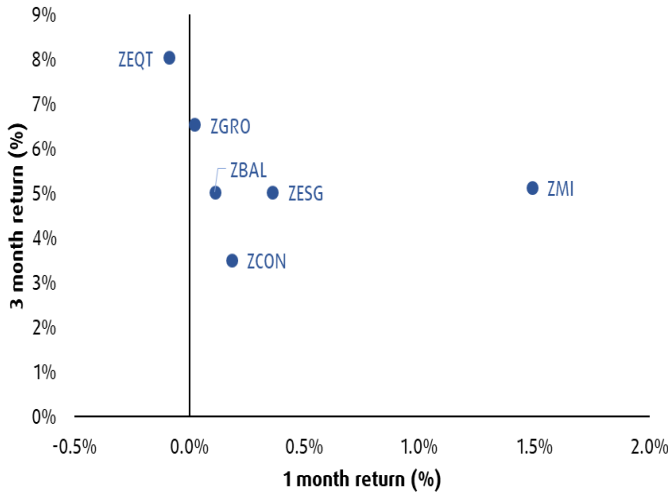
**US/Global Fixed Income**



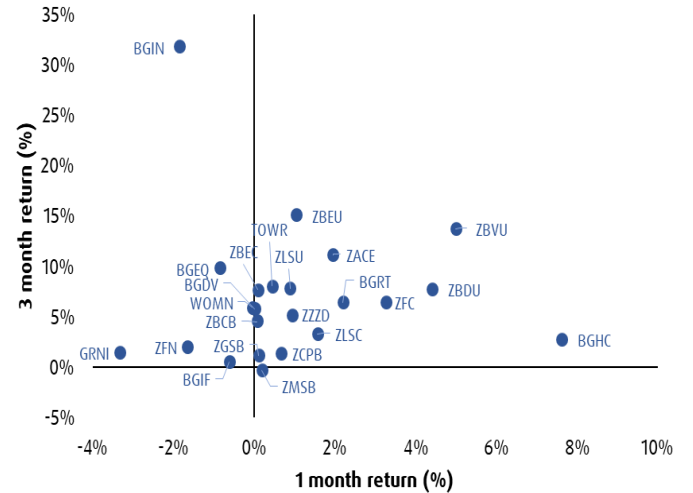
**Preferred Shares**



**Asset Allocation ETFs**

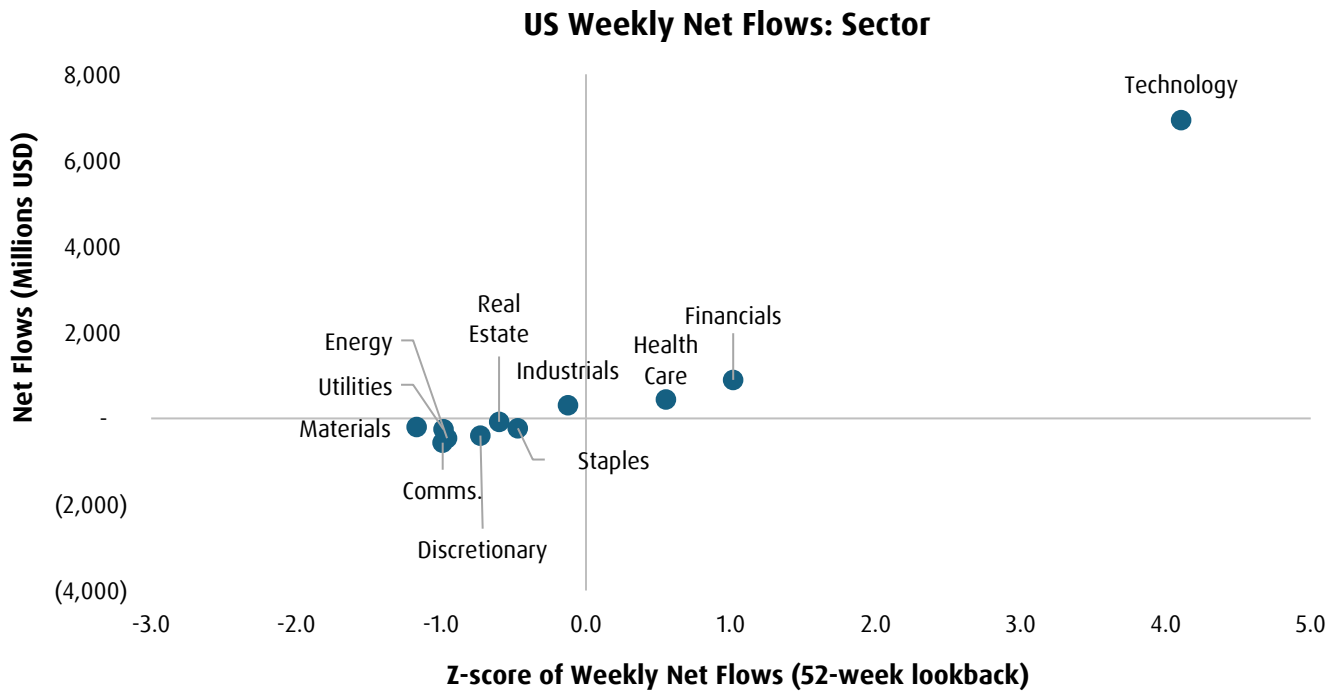


**Alpha Seeking Strategies**

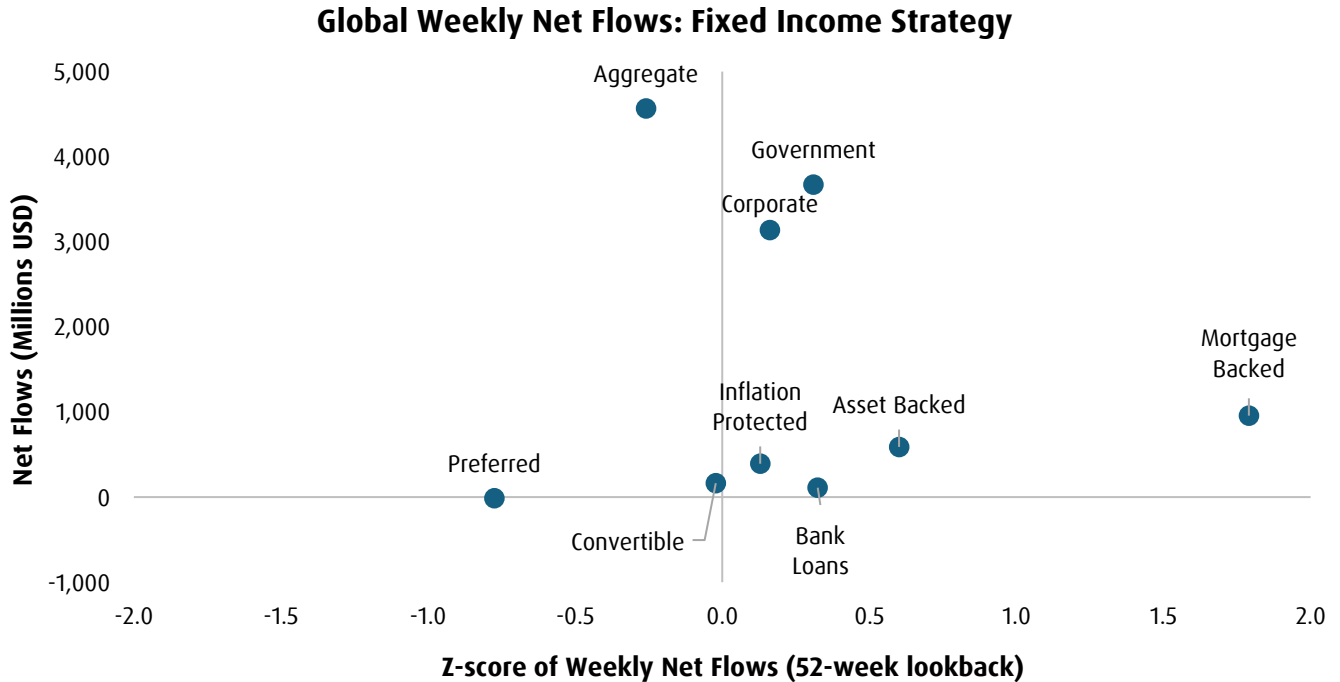


## Global Weekly Flows

Note: All z-score calculations are based on a 52-week lookback period

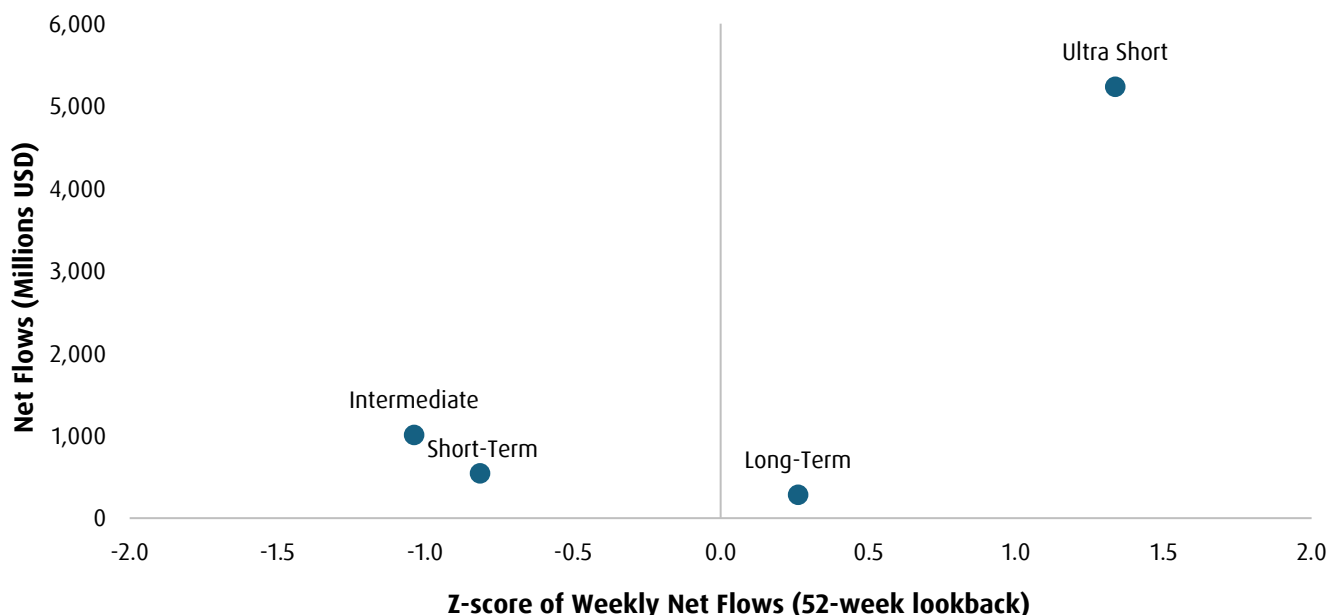


Source: BMO GAM, Bloomberg. Data as of 4 pm June 11, 2026



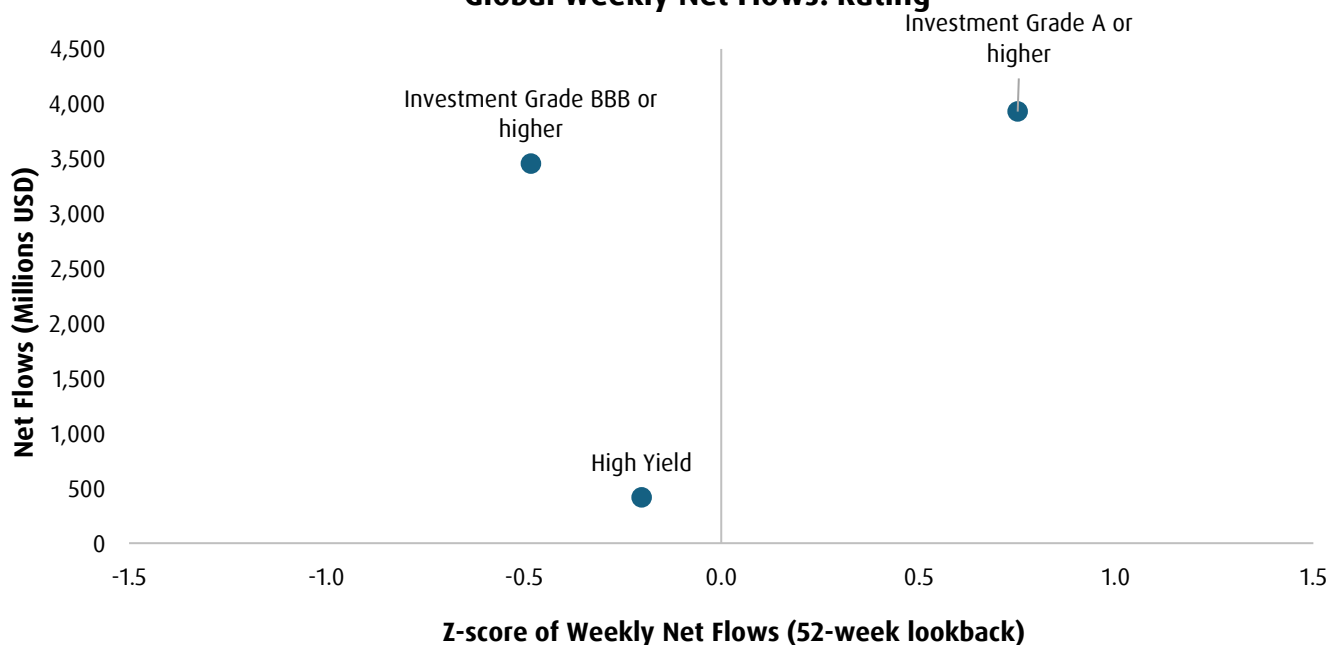
Source: BMO GAM, Bloomberg. Data as of 4 pm June 11, 2026

### Global Weekly Net Flows: Maturity



Source: BMO GAM, Bloomberg. Data as of 4 pm June 11, 2026

### Global Weekly Net Flows: Rating



Source: BMO GAM, Bloomberg. Data as of 4 pm June 11, 2026

## BMO ETF Rankings

Data as of May 31, 2026

### Top BMO Funds (Month)

Fund	Ticker	AUM [\$M]	Flows
BMO Aggregate Bond Index ETF	ZAG	12,801.18	434.1
BMO S&P/TSX Capped Composite Index ETF	ZCN	16,666.05	322.4
BMO Core Plus Bond ETF	ZCPB	2,905.31	291.1
BMO AAA CLO ETF Hedged	ZAAA.F	403.29	149
BMO Short Corporate Bond Index ETF	ZCS	4,337.69	131.7
BMO Gold Bullion ETF (CAD Units)	ZGLD	1,971.86	130.7
BMO Mid-Term U.S. IG Corporate Bond Index ETF	ZIC	3,760.18	105.1
BMO High Yield US Corporate Bond Index ETF	ZJK	1,710.70	63.8
BMO Canadian MBS ETF	ZMBS	464.10	59.9
BMO All-Equity ETF	ZEQT	789.04	55.7

### Top BMO Funds (Year)

Fund	Ticker	AUM [\$M]	Flows
BMO S&P/TSX Capped Composite ETF	ZCN	16,666.05	2605.2
BMO Corporate Bond ETF	ZCB	1,907.22	1758.5
BMO Aggregate Bond ETF	ZAG	12,801.18	1570.8
BMO S&P 500 ETF (CAD)	ZSP	23,819.49	1436.9
BMO Global Equity Active ETF	BGEQ	2,850.49	1323.2
BMO MSCI Emerging Markets ETF	ZEM	3,496.21	1200.3
BMO US Aggregate Bond ETF Hedged Units	ZUAG.F	1,337.83	852.9
BMO Broad Commodity ETF	ZCOM	969.44	818.1
BMO Money Market Fund ETF Series	ZMMK	5,702.74	771.2
BMO Core Plus Bond ETF	ZCPB	2,905.31	762.1

## Market Performance

Source: BMO GAM, Bloomberg. Data as of 4 pm June 11, 2026

### Regional Indices

US Equities	Current	1-day	5-day	MTD	QTD	YTD
S&P 500	7394.30	-1.62%	-2.51%	-2.45%	13.26%	8.02%
Dow Jones	50848.75	-1.87%	-1.38%	-0.36%	9.73%	5.80%
Nasdaq	25809.66	-1.98%	-3.81%	-4.31%	19.54%	11.05%
Russell 2000	2921.03	-1.10%	-0.49%	0.06%	17.01%	17.69%
S&P Midcap 400	3769.67	-1.52%	0.10%	1.20%	11.65%	14.05%

### Cdn Equities

S&P/TSX Composite	34671.46	-0.76%	-1.55%	-0.28%	5.81%	9.33%
S&P/TSX 60	2037.02	-0.47%	-0.85%	0.73%	6.92%	9.52%

### Eurozone Equities

Euro Stoxx 50	6056.96	0.78%	-0.76%	0.11%	8.75%	4.59%
FTSE 100	10303.88	0.48%	-0.54%	-1.01%	1.25%	3.75%
DAX Index	24209.71	0.06%	-2.95%	-3.57%	6.74%	-1.15%
CAC 40	8200.80	0.48%	-0.53%	0.21%	4.91%	0.63%
FTSE MIB	50504.74	0.95%	0.66%	0.94%	13.98%	12.37%
IBEX 35	18290.10	0.81%	0.08%	-0.40%	7.28%	5.68%

### Asia/Pacific Equities

Nikkei	64217.27	0.06%	-4.82%	-3.18%	25.76%	27.57%
Topix	3830.35	-0.45%	-3.07%	-3.20%	9.51%	12.36%
Shanghai Composite	3987.02	-0.16%	-1.74%	-2.00%	2.44%	0.46%
CSI 300	4722.41	-0.55%	-3.72%	-3.47%	6.12%	2.00%
Hang Seng	24249.29	-0.65%	-3.98%	-3.71%	-2.17%	-5.39%
Nifty 50	23161.60	-0.23%	-1.09%	-1.64%	3.72%	-11.36%
S&P/ASX 200	8633.25	-0.23%	-0.61%	-1.13%	1.79%	-0.93%

MSCI World	2551.84	1.30%	-2.65%	-2.56%	12.51%	8.32%
MSCI EM	1666.97	-2.62%	-5.24%	-4.86%	19.31%	18.70%

### Sectors - S&P 500

	Current	1-day	5-day	MTD	QTD	YTD
Tech	6651.75	-2.34%	-5.64%	-5.27%	28.96%	17.03%
Consumer Discretionary	1892.38	-2.23%	-1.73%	-5.52%	8.25%	-1.87%
Industrials	1479.93	-3.41%	-0.56%	1.12%	8.05%	12.70%
Communications	463.35	-1.65%	-3.84%	-6.04%	10.25%	2.42%
Consumer Staples	947.78	1.69%	3.56%	2.86%	2.40%	9.58%
Health Care	1792.03	-1.15%	1.34%	3.00%	4.77%	-0.77%
Energy	866.33	1.46%	-2.85%	1.33%	-8.16%	26.04%
Real Estate	284.31	0.01%	1.05%	1.88%	9.36%	11.48%
Materials	638.27	-2.45%	-0.92%	-0.11%	1.66%	11.12%
Financials	873.57	-0.50%	0.79%	1.97%	6.25%	-4.17%
Utilities	444.96	-0.01%	0.05%	-1.06%	-4.60%	2.57%

### Fixed Income

Nominal Yields	1-month	3-month	6-month	12-month	2-year	5-year	10-year	30-year
US (%)	3.64	3.70	3.79	3.84	4.06	4.18	4.46	4.96
5-day chg (bps)	-1.5	0.1	3.1	5.5	1.9	0.0	-1.2	-1.9
Canada (%)		2.28	2.34	2.55	2.78	3.06	3.41	3.81
5-day chg (bps)		-3.2	-1.4	-4.2	-3.2	-3.3	-2.8	0.2

### Swaps (%)

	1-month	3-month	6-month	12-month	2-year	5-year	10-year	30-year
US	3.63	3.66	3.73	3.87	3.93	3.91	4.06	4.24
Canada	2.26	2.28	2.32	2.48	2.68	2.89	3.17	3.49
Eurozone	2.17	2.23	2.36	2.52	2.58	2.63	2.86	3.09
UK	3.75	3.81	3.94	4.17	4.25	4.26	4.50	4.90
Japan	0.95	0.97	1.02	1.15	1.41	1.92	2.50	3.34

### Key benchmarks\*

US	Current	OAS (bps)	1-day	MTD	QTD	YTD
Aggregate	2347.05	25.52	-0.06%	-0.45%	-0.03%	-0.08%
Broad Corporate	3548.65	73.35	-0.11%	-0.57%	0.64%	0.10%
High Yield	2951.58	275.16	-0.08%	-0.40%	1.78%	1.27%
MBS	2347.91	22.33	0.02%	-0.45%	-0.09%	0.32%

### Canada

FTSE Canada Universe Bond	1220.86		0.06%	0.03%	1.52%	1.76%
Aggregate	243.73	37.19	0.06%	-0.53%	0.97%	1.16%
Corporate	286.79	85.49	0.05%	-0.39%	1.25%	1.35%

### FX and Commodities

	Spot	1-day	5-day	1-month	3-month	YTD
USD/CAD	1.3968	0.18%	0.43%	2.12%	2.76%	1.78%
EUR/USD	1.1578	0.37%	-0.28%	-1.74%	0.10%	-1.43%
USD/JPY	159.93	-0.39%	-0.06%	1.74%	0.62%	2.05%
GBP/USD	1.3417	0.37%	-0.05%	-1.42%	0.04%	-0.43%
USD/CHF	0.7949	-0.63%	0.67%	2.17%	1.84%	0.29%
AUD/USD	0.7049	0.71%	-1.19%	-2.76%	-1.44%	5.63%
USD/MXN	17.249	-1.01%	-0.21%	0.34%	-2.42%	-4.22%
USD/BRL	5.0951	-1.75%	0.60%	4.17%	-1.19%	-6.94%
USD/CNH	6.7635	-0.28%	-0.20%	-0.42%	-1.65%	-3.04%
WTI	86.48	-3.94%	-7.05%	-11.82%	-0.88%	50.61%
Brent	89.16	-4.23%	-6.18%	-14.44%	-3.07%	46.52%
Natural Gas	3.09	-3.14%	-7.52%	6.01%	-3.86%	-16.30%
Gold	4212.26	3.44%	-5.87%	-11.06%	-18.63%	-2.48%
Silver	67.31	6.23%	-8.90%	-21.79%	-21.50%	-6.08%

## Month-to-Date Performance

Data as of 4 pm June 11, 2026

Top 10 ETF Performance	Ticker	MTD (%)	Bottom 10 ETF Performance	Ticker	MTD (%)
BMO Equal Weight US Banks Index ETF	ZBK	4.3%	BMO Equal Weight Global Gold Index ETF	ZGD	-18.3%
BMO Covered Call US Banks ETF	ZWK	4.3%	BMO Junior Gold Index ETF	ZJG	-18.0%
BMO Covered Call Energy ETF	ZWEN	4.2%	BMO Clean Energy Index ETF	ZCLN	-14.4%
BMO Equal Weight Oil and Gas Index ETF	ZEO	3.6%	BMO Equal Weight Global Base Metals Hedged to CAD Index ETF	ZMT	-12.1%
BMO Global Infrastructure Index ETF	ZGI	3.5%	BMO Gold Bullion ETF Hedged to CAD	ZGLH	-8.3%
BMO Equal Weight US Banks Hedged to CAD Index ETF	ZUB	3.1%	BMO Gold Bullion ETF (USD Units)	ZGLD/U	-7.4%
BMO Covered Call Health Care ETF	ZWHC	3.1%	BMO Gold Bullion ETF	ZGLD	-7.2%
BMO Global Consumer Staples Hedged to CAD Index ETF	STPL	2.7%	BMO Covered Call Technology ETF	ZWT	-7.0%
BMO Equal Weight Banks Index	ZEB	2.5%	BMO Nasdaq 100 Equity Hedged to CAD Index ETF	ZQQ	-6.1%
BMO Covered Call Canadian Banks ETF	ZWB	2.3%	BMO Global Innovators Fund Active ETF Series	BGIN	-6.1%

## Broad Based Equity ETFs

Performance as of May 31, 2026

Name	Ticker	Inception Date	YTD (%)	1 MO (%)	3 MO (%)	6 MO (%)	1 YR (%)	3 YR (%)	5 YR (%)	10 YR (%)	Since Inception (%)
BMO Japan Index ETF (Hedged Units)	ZJPN.F	01/24/2022	17.46	5.81	2.43	18.48	46.31	28.64	-	-	23.83
BMO MSCI Emerging Markets Index ETF	ZEM	10/20/2009	25.83	9.88	10.52	26.39	55.45	24.98	9.77	10.90	7.23
BMO S&P/TSX Capped Composite Index ETF	ZCN	05/29/2009	10.59	2.51	1.82	12.03	35.94	24.54	15.23	12.74	10.02
BMO Japan Index ETF	ZJPN	01/24/2022	15.44	5.44	1.21	13.87	30.93	20.17	-	-	13.77
BMO S&P/TSX 60 Index ETF	ZIU	09/27/2023	9.69	2.12	3.13	11.08	32.07	-	-	-	26.03
BMO MSCI EAFE Index ETF	ZEA	02/10/2014	9.89	3.94	0.50	10.80	22.60	18.23	11.45	9.76	8.92
BMO MSCI EAFE Hedged to CAD Index ETF	ZDM	10/20/2009	9.40	3.22	0.49	11.13	22.04	17.06	12.09	10.83	8.63
BMO Nasdaq 100 Equity Index ETF (USD Units)	ZNQ.U	02/11/2021	20.22	10.54	21.60	19.36	42.43	28.98	17.65	-	16.46

BMO NASDAQ 100 Equity Hedged to CAD Index ETF	ZQQ	01/19/2010	18.94	10.57	20.67	17.89	39.53	26.95	16.14	19.95	18.03
BMO S&P US Small Cap Index ETF (USD Units)	ZSML.U	02/05/2020	15.35	1.01	6.99	15.24	32.78	15.93	5.55	-	9.55
BMO S&P US Mid Cap Index ETF (USD Units)	ZMID.U	02/05/2020	13.12	2.44	4.48	13.16	25.44	17.01	7.70	-	10.92
BMO S&P 500 Index ETF (USD Units)	ZSP.U	11/14/2012	11.14	5.25	10.48	11.18	29.46	23.25	13.86	15.25	15.19
BMO S&P US Small Cap Index ETF (Hedged Units)	ZSML.F	02/05/2020	14.07	0.91	6.17	13.71	29.73	13.97	4.15	-	7.75
BMO S&P US Mid Cap Index ETF (Hedged Units)	ZMID.F	02/05/2020	11.91	2.34	3.70	11.70	22.67	15.09	6.31	-	9.17
BMO S&P 500 Hedged to CAD Index ETF	ZUE	05/29/2009	10.00	5.22	9.66	9.84	26.82	21.33	12.40	13.82	13.71
BMO NASDAQ 100 Equity Index ETF	ZNQ	02/12/2019	20.75	12.19	22.90	17.78	43.08	29.64	20.83	-	23.29
BMO Dow Jones Industrial Average Hedged to CAD Index ETF	ZDJ	05/29/2009	5.61	2.82	3.78	6.31	19.58	15.42	8.26	11.43	12.04
BMO S&P US Small Cap Index ETF	ZSML	02/05/2020	15.87	2.52	8.14	13.71	33.39	16.53	8.39	-	10.18
BMO S&P US Mid Cap Index ETF	ZMID	02/05/2020	13.63	3.97	5.60	11.66	26.02	17.62	10.60	-	11.56
BMO S&P 500 Index ETF	ZSP	11/14/2012	11.63	6.83	11.66	9.70	30.05	23.88	16.92	15.82	17.90
BMO MSCI China Selection Equity Index ETF	ZCH	01/19/2010	-11.37	-3.36	-7.20	-15.86	3.60	11.50	-7.26	1.13	2.40
BMO MSCI India Selection Equity Index ETF	ZID	01/19/2010	-16.62	-1.17	-10.25	-19.61	-15.95	3.31	3.41	8.98	6.98

## Factor ETFs

Performance as of May 31, 2026

Name	Ticker	Inception Date	YTD (%)	1 MO (%)	3 MO (%)	6 MO (%)	1 YR (%)	3 YR (%)	5 YR (%)	10 YR (%)	Since Inception (%)
------	--------	----------------	---------	----------	----------	----------	----------	----------	----------	-----------	---------------------

BMO MSCI Canada Value Index ETF	ZVC	10/04/2017	14.63	2.14	5.66	16.74	43.65	24.08	16.81	-	12.42
BMO Canadian Dividend ETF	ZDV	10/21/2011	17.70	3.07	5.16	19.54	40.44	23.92	15.74	12.02	9.99
BMO Low Volatility Emerging Markets Equity ETF	ZLE	05/10/2016	28.04	12.43	14.83	27.52	47.16	22.43	9.31	5.95	5.83
BMO MSCI USA Value Index ETF	ZVU	10/04/2017	46.49	20.73	33.73	47.96	89.85	34.36	18.71	-	14.94
BMO International Dividend ETF	ZDI	11/05/2014	10.73	2.41	-1.10	12.70	24.95	18.87	13.67	9.56	8.70
BMO International Dividend Hedged to CAD ETF	ZDH	09/02/2015	10.88	1.79	-0.84	13.68	25.03	17.67	13.94	10.44	9.96
BMO Low Volatility Canadian Equity Fund	ZLB	10/21/2011	3.89	1.33	-0.38	3.98	15.70	15.88	12.00	10.85	12.69
BMO US Dividend ETF (USD Units)	ZDY.U	03/19/2013	16.12	5.43	7.64	16.22	32.47	19.79	11.79	11.08	11.41
BMO Low Volatility US Equity Fund	ZLU.U	03/19/2013	8.86	2.22	-2.66	7.26	14.51	12.12	8.47	9.44	11.02
BMO MSCI EAFE High Quality Index ETF	ZIQ	10/24/2024	7.94	4.12	-0.65	8.12	15.70	-	-	-	11.79
BMO MSCI USA High Quality Index ETF (USD Units)	ZUQ.U	07/17/2020	8.51	3.78	5.50	8.70	24.23	21.88	13.44	-	15.92
BMO US Dividend Hedged to CAD ETF	ZUD	03/19/2013	15.40	5.43	7.32	15.18	30.14	18.07	10.67	9.88	10.50
BMO Low Volatility US Equity Hedged to CAD ETF	ZLH	02/04/2016	8.11	2.13	-2.95	6.22	12.71	10.70	7.55	8.43	8.91
BMO MSCI All Country World High Quality Index ETF	ZGQ	11/05/2014	12.65	5.88	7.10	11.43	30.21	22.24	14.94	15.30	14.99
BMO Low Volatility International Equity Fund	ZLI	09/02/2015	1.60	0.42	-6.24	0.31	1.04	10.21	6.05	5.64	6.07
BMO MSCI USA High Quality Index ETF (Hedged Units)	ZUQ.F	07/17/2020	7.42	3.69	4.74	7.39	21.64	20.01	12.06	-	14.51
BMO Low Volatility International Equity Hedged to CAD ETF	ZLD	02/04/2016	1.68	-0.23	-6.01	1.15	0.62	8.93	6.28	6.31	6.51
BMO US Dividend ETF	ZDY	03/19/2013	16.64	7.01	8.79	14.68	33.07	20.40	14.80	11.63	13.92

BMO Low Volatility US Equity Fund	ZLU	03/19/2013	9.34	3.75	-1.62	5.83	15.03	12.70	11.40	9.99	13.53
BMO MSCI USA High Quality Index ETF	ZUQ	11/05/2014	9.00	5.34	6.63	7.26	24.80	22.51	16.50	16.72	16.62
BMO MSCI Europe High Quality Hedged to CAD Index ETF	ZEQ	02/10/2014	3.72	2.52	-2.54	4.26	5.45	6.25	5.36	8.66	8.74

## Enhanced Income ETFs

Performance as of May 31, 2026

Name	Ticker	Inception Date	YTD (%)	1 MO (%)	3 MO (%)	6 MO (%)	1 YR (%)	3 YR (%)	5 YR (%)	10 YR (%)	Since Inception (%)
BMO Covered Call Canadian Banks Fund	ZWB.U	01/24/2022	15.83	2.44	9.48	23.27	49.56	26.01	-	-	11.31
BMO Covered Call Canadian Banks ETF	ZWB	01/28/2011	16.34	3.97	10.65	21.64	50.24	26.66	14.03	12.36	10.97
BMO Canadian High Dividend Covered Call Fund	ZWC	02/03/2017	10.68	1.40	1.97	11.90	28.29	17.81	11.30	-	8.33
BMO Covered Call Utilities Fund	ZWU	10/20/2011	10.64	-0.12	-0.27	8.06	15.85	11.24	6.73	6.27	5.58
BMO Covered Call Energy Fund	ZWEN	01/23/2023	24.82	-3.45	6.19	21.83	38.30	19.17	-	-	12.85
BMO Europe High Dividend Covered Call Fund	ZWP	03/02/2018	3.95	2.45	-2.21	5.79	15.97	14.04	11.07	-	7.55
BMO Global Enhanced Income Fund ETF Series	ZWQT	06/21/2023	12.95	4.91	7.31	13.31	29.82	-	-	-	17.68
BMO US High Dividend Covered Call Fund	ZWH.U	02/06/2015	11.36	3.86	5.16	11.58	25.39	14.06	8.39	9.08	8.84
BMO Covered Call Technology Fund	ZWT	01/20/2021	19.05	12.45	25.79	16.47	47.95	35.67	23.66	-	22.54
BMO Global High Dividend Covered Call ETF	ZWG	01/16/2020	10.17	5.17	4.58	10.30	25.25	16.74	11.30	-	10.19
BMO US High Dividend Covered Call Hedged to CAD ETF	ZWS	03/02/2018	10.53	3.88	4.69	10.46	23.14	12.45	7.32	-	7.75

BMO Europe High Dividend Covered Call Hedged to CAD ETF	ZWE	09/02/2015	3.84	1.57	-1.90	5.94	13.03	10.52	9.46	8.38	7.92
BMO Covered Call Dow Jones Industrial Average Hedged to CAD ETF	ZWA	10/20/2011	3.96	2.45	2.89	4.70	17.26	12.89	7.12	9.79	9.97
BMO US Put Write ETF (USD Units)	ZPW.U	09/02/2015	2.66	2.40	3.35	3.67	12.92	10.85	6.96	5.36	5.24
BMO Covered Call US Banks ETF	ZWK	02/12/2019	3.42	0.28	5.28	7.56	30.14	26.38	5.23	-	6.65
BMO Premium Yield Fund	ZPAY.U	01/15/2020	4.51	2.47	4.20	5.16	13.41	10.28	6.39	-	7.33
BMO US High Dividend Covered Call Fund	ZWH	02/10/2014	11.85	5.41	6.28	10.10	25.95	14.64	11.31	9.63	11.25
BMO US Put Write Hedged to CAD ETF	ZPH	02/03/2017	1.90	2.39	2.89	2.62	10.90	9.34	5.96	-	4.35
BMO Premium Yield Fund	ZPAY.F	01/15/2020	3.73	2.46	3.70	4.09	11.41	8.84	5.47	-	6.33
BMO US Put Write ETF	ZPW	09/02/2015	3.11	3.93	4.45	2.29	13.44	11.42	9.84	5.84	5.57
BMO Premium Yield Fund	ZPAY	01/15/2020	4.98	4.00	5.32	3.77	13.95	10.87	9.27	-	8.27
BMO Covered Call Health Care ETF	ZWHC	01/23/2023	-7.32	-0.42	-9.20	-9.65	3.68	3.55	-	-	1.76

## Sector ETFs

Performance as of May 31, 2026

Name	Ticker	Inception Date	YTD (%)	1 MO (%)	3 MO (%)	6 MO (%)	1 YR (%)	3 YR (%)	5 YR (%)	10 YR (%)	Since Inception (%)
BMO Equal Weight Global Gold Index ETF	ZGD	11/14/2012	11.84	4.70	-18.61	16.33	105.22	59.39	31.69	19.76	11.34
BMO Junior Gold Index ETF	ZJG	01/19/2010	7.98	4.28	-23.35	11.98	92.10	53.77	28.24	17.98	6.61
BMO Equal Weight Global Base Metals Hedged to CAD Index ETF	ZMT	10/20/2009	36.87	11.81	7.77	47.37	112.36	42.87	20.24	17.77	5.38
BMO Gold Bullion ETF (USD Units)	ZGLD.U	03/04/2024	3.99	-1.43	-12.99	8.35	38.38	-	-	-	42.24
BMO Gold Bullion Fund	ZGLH	03/05/2024	3.12	-1.56	-13.37	7.17	35.88	-	-	-	38.71

BMO Gold Bullion ETF	ZGLD	03/04/2024	4.45	0.04	-12.06	6.92	39.02	-	-	-	43.37
BMO Equal Weight Banks Index ETF	ZEB	10/20/2009	19.28	4.36	12.53	25.30	60.44	33.73	18.41	15.97	13.73
BMO Equal Weight Industrials Index ETF	ZIN	11/14/2012	21.95	4.20	9.57	25.01	43.73	21.74	13.52	13.35	12.80
BMO Equal Weight Oil & Gas Index ETF	ZEO	10/20/2009	32.19	-1.43	11.49	28.58	50.24	27.59	26.20	10.44	5.73
BMO Equal Weight Utilities Index ETF	ZUT	01/19/2010	19.64	4.09	6.88	16.89	30.04	13.49	8.10	10.61	8.85
BMO Equal Weight REITs Index ETF	ZRE	05/19/2010	10.15	1.23	2.85	11.17	13.60	9.47	4.15	7.22	8.25
BMO Equal Weight US Banks Hedged to CAD Index ETF	ZUB	05/19/2010	1.95	-1.89	2.85	9.49	26.74	27.78	3.96	9.51	8.09
BMO Global Infrastructure Index ETF	ZGI	01/19/2010	12.01	-2.42	-1.86	8.62	13.16	15.11	11.83	8.98	11.63
BMO Global Consumer Staples Hedged to CAD Index ETF	STPL	04/03/2017	2.60	-0.39	-8.76	0.49	-0.71	3.46	3.45	-	4.46
BMO Global Agriculture ETF	ZEAT	01/23/2023	8.00	-3.61	-8.16	5.03	1.35	2.56	-	-	-2.19
BMO Global Communications Index ETF	COMM	05/02/2018	10.06	5.79	7.59	7.98	21.48	24.09	13.49	-	13.72
BMO Equal Weight US Banks Index ETF	ZBK	02/10/2014	3.64	-0.30	4.87	9.68	30.56	30.78	8.27	11.85	11.36
BMO Equal Weight US Health Care Hedged to CAD Index ETF	ZUH	05/19/2010	-2.28	2.72	-4.89	-4.71	9.81	0.93	-1.81	5.70	10.36
BMO Global Consumer Discretionary Hedged to CAD Index ETF	DISC	04/03/2017	-2.09	1.00	-2.07	-2.30	3.55	13.62	6.39	-	10.45
BMO Equal Weight US Health Care Index ETF	ZHU	02/12/2019	-1.06	4.34	-3.33	-5.09	12.35	3.13	2.16	-	5.74

## Structured Outcome ETFs

Performance as of May 31, 2026

Name	Ticker	Inception Date	YTD (%)	1 MO (%)	3 MO (%)	6 MO (%)	1 YR (%)	3 YR (%)	5 YR (%)	10 YR (%)	Since Inception (%)
BMO US Equity Buffer Hedged to CAD ETF – July	ZJUL	06/27/2024	3.06	0.84	2.57	3.43	11.10	-	-	-	8.90
BMO US Equity Buffer Hedged to CAD ETF – January	ZJAN	01/24/2024	4.15	1.78	3.78	4.88	12.02	-	-	-	9.57
BMO US Equity Buffer Hedged to CAD ETF – October	ZOCT	09/27/2023	4.25	1.71	3.82	4.53	11.89	-	-	-	9.82
BMO US Equity Buffer Hedged to CAD ETF – April	ZAPR	03/26/2024	6.42	1.52	5.86	6.82	11.55	-	-	-	9.24

## Sustainable Investing ETFs

Performance as of May 31, 2026

Name	Ticker	Inception Date	YTD (%)	1 MO (%)	3 MO (%)	6 MO (%)	1 YR (%)	3 YR (%)	5 YR (%)	10 YR (%)	Since Inception (%)
BMO Clean Energy Index Fund	ZCLN	01/20/2021	44.00	15.29	30.23	38.11	89.90	10.80	5.07	-	-2.13
BMO MSCI Canada Selection Equity Index ETF	ESGA	01/15/2020	5.91	2.12	0.37	6.78	29.10	24.07	12.74	-	13.08
BMO MSCI EAFE Selection Equity Index ETF	ESGE	01/16/2020	9.34	4.02	0.63	9.47	20.60	15.44	9.84	-	8.88
BMO MSCI USA Selection Equity Index ETF	ESGY.F	01/20/2021	8.67	4.48	9.41	9.40	26.30	21.35	12.35	-	13.38
BMO MSCI Global Selection Equity Index ETF	ESGG	01/16/2020	9.82	5.46	8.22	9.17	27.24	21.71	14.74	-	14.01
BMO MSCI USA Selection Equity Index ETF	ESGY	01/15/2020	10.27	6.11	11.40	9.29	29.56	23.90	16.80	-	16.42
BMO MSCI ACWI Paris Aligned Climate Equity Index ETF	ZGRN	01/24/2022	9.65	6.06	9.33	8.46	26.13	20.73	-	-	14.01
BMO ESG Corporate Bond Index ETF	ESGB	01/15/2020	1.63	1.21	-0.07	1.07	4.01	6.04	2.22	-	2.29

BMO ESG US Corporate Bond Hedged to CAD Index ETF	ESGF	01/15/2020	-0.10	0.62	-1.26	-0.65	3.77	3.47	-0.77	-	-0.05
---	------	------------	-------	------	-------	-------	------	------	-------	---	-------

## Canadian Precise Market

Performance as of May 31, 2026

Name	Ticker	Inception Date	YTD (%)	1 MO (%)	3 MO (%)	6 MO (%)	1 YR (%)	3 YR (%)	5 YR (%)	10 YR (%)	Since Inception (%)
BMO Mid Corporate Bond Index ETF	ZCM	01/19/2010	1.92	1.38	-0.40	1.22	4.98	6.81	2.43	3.11	4.20
BMO Short Corporate Bond Index ETF	ZCS	10/20/2009	1.30	0.85	0.18	1.19	3.88	5.98	2.86	2.82	3.01
BMO Short Corporate Bond Index ETF (Accumulating Units)	ZCS.L	02/03/2017	1.30	0.85	0.18	1.19	3.88	5.98	2.86	-	2.87
BMO Mid Provincial Bond Index ETF	ZMP	03/19/2013	1.61	1.28	-0.85	0.50	3.86	4.84	1.33	1.95	2.57
BMO Short Provincial Bond Index ETF	ZPS	10/20/2009	0.91	0.70	-0.27	0.51	2.50	4.17	1.66	1.72	2.11
BMO Short Provincial Bond Index ETF (Accumulating Units)	ZPS.L	02/03/2017	0.91	0.70	-0.27	0.51	2.50	4.17	1.66	-	1.81
BMO Long Corporate Bond Index ETF	ZLC	01/19/2010	2.71	2.28	-0.48	0.88	4.02	5.63	1.13	2.75	4.81
BMO Short Federal Bond Index ETF	ZFS	10/20/2009	0.86	0.68	-0.30	0.50	2.28	3.81	1.45	1.37	1.69
BMO Short Federal Bond Index ETF (Accumulating)	ZFS.L	02/03/2017	0.85	0.68	-0.30	0.50	2.27	3.80	1.45	-	1.48
BMO Mid Federal Bond Index ETF	ZFM	05/29/2009	1.24	1.21	-1.21	-0.04	2.36	3.39	0.16	0.77	2.44
BMO Long Provincial Bond Index ETF	ZPL	03/19/2013	3.01	2.57	-0.54	-0.47	2.49	2.34	-1.81	0.83	2.05
BMO Long Federal Bond Index ETF	ZFL	05/19/2010	2.30	2.55	-2.05	-1.86	-1.81	-0.42	-3.68	-1.17	1.93

## Canadian Fixed Income

Performance as of May 31, 2026

Name	Ticker	Inception Date	YTD (%)	1 MO (%)	3 MO (%)	6 MO (%)	1 YR (%)	3 YR (%)	5 YR (%)	10 YR (%)	Since Inception (%)
BMO Canadian Bank Income Index ETF	ZBI	02/07/2022	1.70	0.69	0.50	1.97	5.45	8.39	-	-	4.18
BMO BBB Corporate Bond Index ETF	ZBBB	02/05/2020	1.66	1.04	0.04	1.38	4.71	6.58	2.89	-	3.11
BMO Corporate Discount Bond ETF	ZCDB	01/24/2022	1.24	0.89	-0.23	0.85	3.67	6.01	-	-	3.30
BMO High Quality Corporate Bond Index ETF	ZQB	02/05/2020	1.32	0.97	0.00	1.07	3.74	5.85	2.54	-	2.65
BMO Corporate Bond Index ETF	ZCB	03/02/2018	1.75	1.29	-0.08	1.13	4.05	5.99	2.21	-	2.97
BMO Short-Term Bond Index ETF	ZSB	03/02/2018	1.05	0.76	-0.10	0.79	2.95	4.69	2.03	-	2.37
BMO Short-Term Discount Bond ETF	ZSDB	01/24/2022	1.02	0.74	-0.13	0.72	2.82	4.85	-	-	2.80
BMO Canadian MBS Index ETF	ZMBS	02/05/2020	1.06	0.60	-0.01	0.91	2.84	4.34	1.96	-	2.12
BMO Ultra Short-Term Bond Fund	ZST	01/28/2011	1.06	0.28	0.65	1.28	2.76	4.24	3.19	2.47	2.22
BMO Ultra Short-Term Bond Fund	ZST.L	02/03/2017	1.06	0.28	0.65	1.27	2.76	4.24	3.19	-	2.51
BMO Money Market Fund ETF Series	ZMMK	11/29/2021	0.96	0.20	0.58	1.16	2.51	3.87	-	-	3.45
BMO Aggregate Bond Index ETF	ZAG	01/19/2010	1.70	1.39	-0.53	0.39	2.90	4.19	0.81	1.74	2.86
BMO Discount Bond Index ETF	ZDB	02/10/2014	1.58	1.37	-0.55	0.20	2.46	4.04	0.63	1.66	2.32
BMO Government Bond Index ETF	ZGB	03/02/2018	1.67	1.41	-0.67	0.11	2.39	3.44	0.21	-	1.57
BMO Real Return Bond Index ETF	ZRR	05/19/2010	3.97	2.45	0.41	1.16	2.48	3.11	-0.03	1.19	2.69

## US/Global Fixed Income

Performance as of May 31, 2026

Name	Ticker	Inception Date	YTD (%)	1 MO (%)	3 MO (%)	6 MO (%)	1 YR (%)	3 YR (%)	5 YR (%)	10 YR (%)	Since Inception (%)
BMO Mid-Term US IG Corporate Bond Index ETF (USD Units)	ZIC.U	03/19/2013	0.38	0.47	-1.11	0.26	6.10	5.88	1.16	2.90	2.89
BMO High Yield US Corporate Bond Index ETF (USD Units)	ZJK.U	02/11/2021	1.54	0.49	0.89	2.21	7.33	8.86	3.73	-	3.60
BMO Mid-Term US Treasury Bond Index ETF (USD Units)	ZTM.U	02/21/2017	-0.30	-0.06	-2.22	-0.84	3.68	2.90	-0.44	-	1.27
BMO Emerging Markets Bond Hedged to CAD Index ETF	ZEF	05/21/2010	0.17	0.32	-0.78	0.40	5.33	6.38	0.25	1.52	3.56
BMO US Aggregate Bond Index ETF (USD Units)	ZUAG.U	01/23/2023	0.54	0.34	-1.25	0.30	5.20	3.82	-	-	3.30
BMO Mid-Term US IG Corporate Bond Hedged to CAD Index ETF	ZMU	03/20/2013	-0.34	0.34	-1.57	-0.62	4.20	4.38	0.11	2.01	2.45
BMO Floating Rate High Yield ETF	ZFH	02/10/2014	2.08	0.72	2.63	2.76	7.66	10.09	7.05	5.79	5.38
BMO Short-Term US Treasury Bond Index ETF (USD Units)	ZTS.U	02/21/2017	0.26	0.02	-0.67	0.44	3.19	3.79	1.19	-	1.63
BMO High Yield US Corporate Bond Hedged to CAD Index Fund	ZHY	10/20/2009	0.77	0.36	0.41	1.27	5.36	7.35	2.63	3.86	4.74
BMO Short-Term US TIPS Index ETF (USD Units)	ZTIP.U	01/20/2021	2.02	0.09	1.09	2.01	4.41	5.14	3.30	-	3.50
BMO Ultra Short-Term US Bond ETF (US Dollar Accumulating Units)	ZUS.V	02/12/2019	1.54	0.36	0.92	1.91	4.26	4.98	3.51	-	2.81
BMO Ultra Short-Term US Bond ETF (USD Units)	ZUS.U	02/12/2019	1.54	0.36	0.92	1.91	4.26	4.98	3.51	-	2.81

BMO US Aggregate Bond Index ETF (Hedged Units)	ZUAG.F	01/23/2023	-0.22	0.19	-1.76	-0.63	3.23	2.36	-	-	1.93
BMO USD Cash Management ETF (USD Units)	ZUCM.U	09/27/2023	1.44	0.30	0.89	1.77	3.86	-	-	-	4.57
BMO Short-Term US IG Corporate Bond Hedged to CAD Index ETF	ZSU	02/10/2014	0.04	0.13	-0.64	0.17	2.52	4.01	1.22	1.74	1.80
BMO Short-Term US TIPS Index ETF (Hedged Units)	ZTIP.F	01/20/2021	1.30	-0.06	0.62	1.11	2.54	3.79	2.42	-	2.67
BMO Long-Term US Treasury Bond Index ETF (USD Units)	ZTL.U	02/21/2017	-0.33	0.55	-4.42	-2.75	4.04	-1.97	-6.18	-	-1.03
BMO Mid-Term US IG Corporate Bond Index ETF	ZIC	03/19/2013	0.83	1.97	-0.05	-1.07	6.59	6.42	3.89	3.43	5.26
BMO Long-Term US Treasury Bond Index ETF (Hedged Units)	ZTL.F	02/05/2020	-1.15	0.39	-4.97	-3.68	2.02	-3.53	-7.20	-	-5.88
BMO High Yield US Corporate Bond Index ETF	ZJK	10/04/2017	1.99	2.00	1.97	0.86	7.83	9.43	6.53	-	5.29
BMO Mid-Term US Treasury Bond Index ETF	ZTM	02/21/2017	0.14	1.43	-1.17	-2.15	4.16	3.43	2.24	-	1.85
BMO US Aggregate Bond Index ETF	ZUAG	01/23/2023	0.99	1.84	-0.19	-1.03	5.67	4.35	-	-	4.23
BMO Short-Term US Treasury Bond Index ETF	ZTS	02/21/2017	0.71	1.51	0.40	-0.89	3.66	4.32	3.91	-	2.16
BMO Short-Term US TIPS Index ETF	ZTIP	01/20/2021	2.47	1.58	2.17	0.66	4.89	5.69	6.09	-	5.19
BMO USD Cash Management ETF	ZUCM	09/27/2023	1.89	1.80	1.97	0.42	4.33	-	-	-	5.35
BMO Long-Term US Treasury Bond Index ETF	ZTL	02/21/2017	0.11	2.05	-3.39	-4.03	4.52	-1.47	-3.65	-	-0.52

## Preferred Shares

Performance as of May 31, 2026

Name	Ticker	Inception Date	YTD (%)	1 MO (%)	3 MO (%)	6 MO (%)	1 YR (%)	3 YR (%)	5 YR (%)	10 YR (%)	Since Inception (%)
BMO Laddered Preferred Share Index ETF (US Dollar Units)	ZPR.U	01/24/2022	6.11	0.10	3.30	10.54	19.59	19.89	-	-	6.19
BMO Laddered Preferred Share Index ETF	ZPR	11/14/2012	6.58	1.60	4.41	9.08	20.16	20.52	8.09	8.20	3.95
BMO US Preferred Share Index ETF (USD Units)	ZUP.U	02/03/2017	1.28	-0.61	-0.97	1.44	7.00	7.42	-0.79	-	2.42
BMO US Preferred Share Hedged to CAD Index ETF	ZHP	02/03/2017	0.39	-0.75	-1.56	0.37	4.91	5.71	-1.94	-	1.33
BMO US Preferred Share Index ETF	ZUP	02/03/2017	1.72	0.87	0.09	0.09	7.48	7.97	1.88	-	3.09

## Asset Allocation ETFs

Performance as of May 31, 2026

Name	Ticker	Inception Date	YTD (%)	1 MO (%)	3 MO (%)	6 MO (%)	1 YR (%)	3 YR (%)	5 YR (%)	10 YR (%)	Since Inception (%)
BMO All-Equity ETF	ZEQT	01/24/2022	12.41	5.43	6.90	12.00	32.18	22.82	-	-	15.41
BMO Monthly Income ETF (USD Units)	ZMI.U	01/24/2022	8.08	1.74	1.98	9.88	18.78	13.20	-	-	6.70
BMO Growth ETF	ZGRO	02/12/2019	10.10	4.57	5.34	9.53	25.86	18.87	11.64	-	11.82
BMO Growth ETF (Fixed Percentage Distribution Units)	ZGRO.T	01/23/2023	10.11	4.57	5.34	9.53	25.86	18.87	-	-	16.91
BMO Balanced ETF	ZBAL	02/12/2019	7.81	3.70	3.78	7.08	19.76	14.92	8.75	-	9.21
BMO Balanced ETF (T6 Series)	ZBAL.T	01/24/2022	7.81	3.70	3.78	7.08	19.76	14.91	-	-	9.42
BMO Monthly Income ETF	ZMI	01/28/2011	8.56	3.26	3.07	8.42	19.32	13.79	8.59	7.02	6.47
BMO Balanced ESG ETF	ZESG	01/16/2020	6.05	3.38	3.67	5.39	17.45	14.87	8.82	-	8.69
BMO Conservative ETF	ZCON	02/12/2019	5.52	2.81	2.21	4.66	13.87	11.02	5.88	-	6.62

## Alpha Seeking Strategies

Performance as of May 31, 2026

Name	Ticker	Inception Date	YTD (%)	1 MO (%)	3 MO (%)	6 MO (%)	1 YR (%)	3 YR (%)	5 YR (%)	10 YR (%)	Since Inception (%)
BMO Brookfield Global Renewables Infrastructure Fund ETF Series	GRNI	03/01/2022	10.75	-2.44	-0.64	7.83	23.17	12.22	-	-	7.50
BMO Global Innovators Fund Active ETF Series	BGIN	06/27/2023	47.18	17.15	36.18	43.76	81.31	-	-	-	39.16
BMO Long Short Canadian Equity ETF	ZLSC	09/27/2023	8.73	1.17	2.47	9.31	22.53	-	-	-	20.81
BMO SIA Focused Canadian Equity Fund ETF Series	ZFC	12/06/2018	16.88	2.30	3.47	18.14	28.53	16.04	10.66	-	10.77
BMO Global Infrastructure Fund Active ETF Series	BGIF	06/27/2023	7.13	-1.76	-3.54	3.67	13.05	-	-	-	16.43
BMO Global Dividend Opportunities Fund Active ETF Series	BGDV	09/27/2023	6.06	3.23	2.35	5.78	19.73	-	-	-	23.50
BMO Global Equity Fund Active ETF Series	BGEQ	06/27/2023	11.35	6.94	8.91	10.16	27.94	-	-	-	24.40
BMO Tactical Dividend ETF Fund	ZZZD	01/08/2019	10.08	1.54	3.28	9.56	14.80	9.38	7.02	-	5.04
BMO U.S. All Cap Equity Fund ETF Series	ZACE	06/07/2021	10.38	7.17	11.07	7.67	28.48	25.20	-	-	15.41
BMO Global Health Care Fund Active ETF Series	BGHC	06/27/2023	-2.61	5.04	-4.63	-5.59	19.63	-	-	-	9.39
BMO Women In Leadership Fund	WOMN	03/01/2022	5.68	4.62	6.69	4.88	13.63	17.42	11.09	-	11.19
BMO Sustainable Global Multi-Sector Bond Fund	ZMSB	05/23/2018	-0.21	0.62	-1.39	-0.04	3.93	5.63	1.79	-	2.98
BMO Global Strategic Bond Fund	ZGSB	05/23/2018	1.56	0.73	0.44	0.96	6.69	7.15	1.71	-	3.20
BMO Brookfield Global Real Estate Tech Fund ETF Series	TOWR	03/01/2022	13.38	1.46	3.03	11.65	11.00	8.69	-	-	2.91

BMO SIA Focused North American Equity Fund ETF Series	ZFN	12/06/2018	-1.82	0.92	-1.98	-3.12	11.82	17.46	11.35	-	10.92
BMO Global REIT Fund Active ETF Series	BGRT	06/27/2023	8.70	1.08	0.68	7.46	7.59	-	-	-	8.26
BMO Core Plus Bond Fund	ZCPB	05/23/2018	2.06	1.44	-0.15	0.81	3.44	4.52	0.81	-	2.02
BMO Long Short US Equity ETF	ZLSU	09/27/2023	7.31	5.89	8.68	3.71	11.16	-	-	-	18.64

**Disclaimers:**

This report is for information purposes only. The information contained herein is not, and should not be construed as investment, tax or legal advice to any party. Particular investments and/or trading strategies should be evaluated, and professional advice should be obtained with respect to any circumstance. The viewpoints expressed by the authors represents their assessment of the markets at the time of publication. Those views are subject to change without notice at any time. Past performance is no guarantee of future results.

Commissions, management fees and expenses all may be associated with investments in BMO ETFs and ETF Series units of the BMO Mutual Funds. Please read the ETF facts or prospectus of the relevant BMO ETF or ETF Series of BMO Mutual Fund before investing. The indicated rates of return are the historical compounded total returns including changes in share or unit value and the reinvestment of all dividends or distributions and do not take into account the sales, redemption, distribution, optional charges or income tax payable by the unitholder that would have reduced returns. BMO ETFs and ETF Series units of the BMO Mutual Funds are not guaranteed, their values change frequently and past performance may not be repeated.

For a summary of the risks of an investment in the BMO ETFs or ETF Series units of the BMO Mutual Funds, please see the specific risks set out in the relevant prospectus. BMO ETFs and ETF Series units of the BMO Mutual Funds trade like stocks, fluctuate in market value and may trade at a discount to their net asset value, which may increase the risk of loss. Distributions are not guaranteed and are subject to change and/or elimination.

BMO ETFs are managed by BMO Asset Management Inc., an investment fund manager, a portfolio manager, and a separate legal entity from Bank of Montreal. The BMO Mutual Funds are managed by BMO Investments Inc., an investment fund manager and a separate legal entity from Bank of Montreal.

BMO Global Asset Management is a brand name under which BMO Asset Management Inc. and BMO Investments Inc. operate.

"BMO (M-bar roundel symbol)" is a registered trademark of Bank of Montreal, used under licence.

The ETF referred to herein is not sponsored, endorsed, or promoted by MSCI and MSCI bears no liability with respect to the ETF or any index on which such ETF is based. The ETF's prospectus contains a more detailed description of the limited relationship MSCI has with the Manager and any related ETF.

Nasdaq® is a registered trademark of Nasdaq, Inc. (which with its affiliates is referred to as the "Corporations") and is licensed for use by the BMO Asset Management Inc., as manager, for BMO Nasdaq 100 Equity Index ETF (ZNQ). The ETF has not been passed on by the Corporations as to their legality or suitability. The ETF is not issued, endorsed, sold, or promoted by the Corporations. The Corporations make no warranties and bear no liability with respect to the ETF.

The Index is a product of S&P Dow Jones Indices LLC or its affiliates ("SPDJI"), and has been licensed for use by the Manager. S&P®, S&P 500®, US 500, The 500, iBoxx®, iTraxx® and CDX® are trademarks of S&P Global, Inc. or its affiliates ("S&P") and Dow Jones® is a registered trademark of Dow Jones Trademark Holdings LLC ("Dow Jones"), and these trademarks have been licensed for use by SPDJI and sublicensed for certain purposes by the Manager. The ETF is not sponsored, endorsed, sold or promoted by SPDJI, Dow Jones, S&P, their respective affiliates, and none of such parties make any representation regarding the advisability of investing in such product(s) nor do they have any liability for any errors, omissions, or interruptions of the Index.

This report may contain links to other sites that BMO Global Asset Management does not own or operate. Any content from or links to a third-party website are not reviewed or endorsed by us. You use any external websites or third-party content at your own risk. Accordingly, we disclaim any responsibility for them.