

ETF Industry Flows & Performance

Energy in Charge

By: **Bipan Rai, MD and Head of ETF and Alternatives Strategy at BMO GAM**

Saakshi Mehta, VP, ETF and Alternatives Strategy at BMO GAM

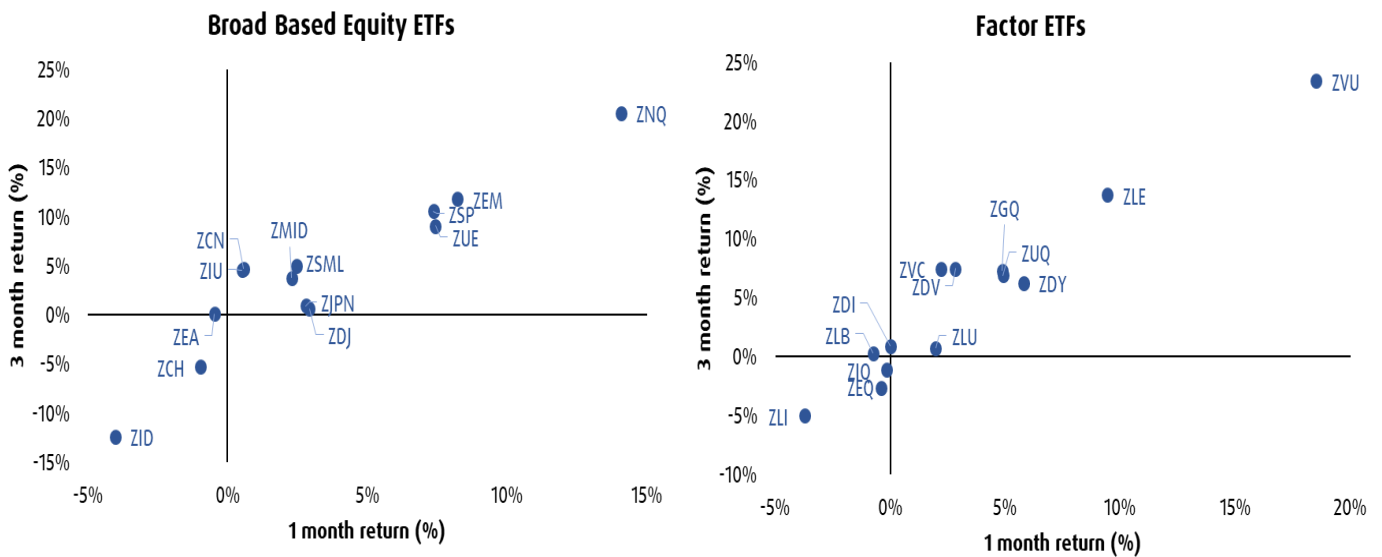
For more: [BMO ETF Dashboard](#) | [The Basis Point](#)

Summary (as of May 15th at 9am):

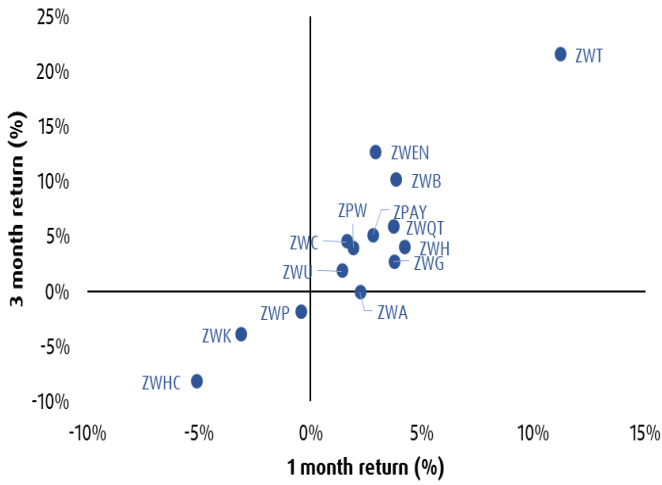
- **Energy in charge:** Energy ETFs (ZEO, ZWEN) are regaining momentum as prompt crude prices stay elevated. Strong gains in ZEO are also supported by fundamentals, with top holdings Cenovus and Suncor delivering strong Q1 results last week.
- **Tech keeps the crown:** ZNQ and ZWT emerge as the clear winners sitting firmly in the top-right quadrant as the AI optimism continue to drive market leadership and earnings strength.
- **Divergence in emerging markets:** India (ZID) and China (ZCH) continue to lag on both 1m and 3m horizons, highlighting uneven global growth dynamics and persistent weakness outside AI-linked pockets.
- **Mixed signals:** US sector flows remain tech-led, with Real Estate also drawing meaningful inflows. Health Care and Staples moved into positive territory this week, signalling a pickup in defensive positioning, while Financials and Industrials continue to see net outflows.

Performance Charts – Standard Performance Data Included Below

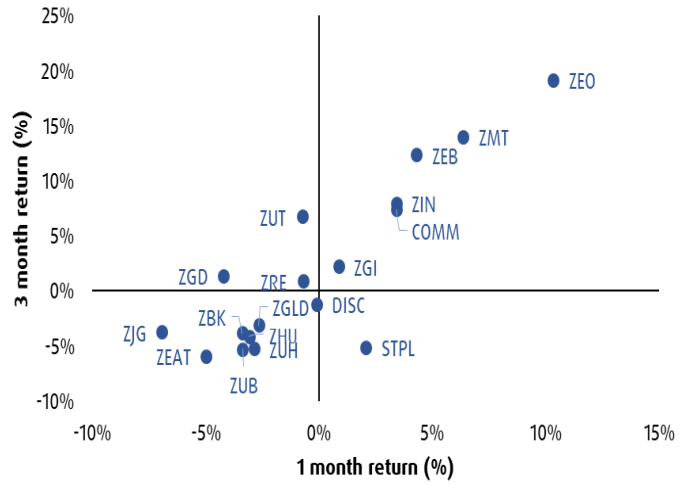
Data as of 4 pm May 14, 2026



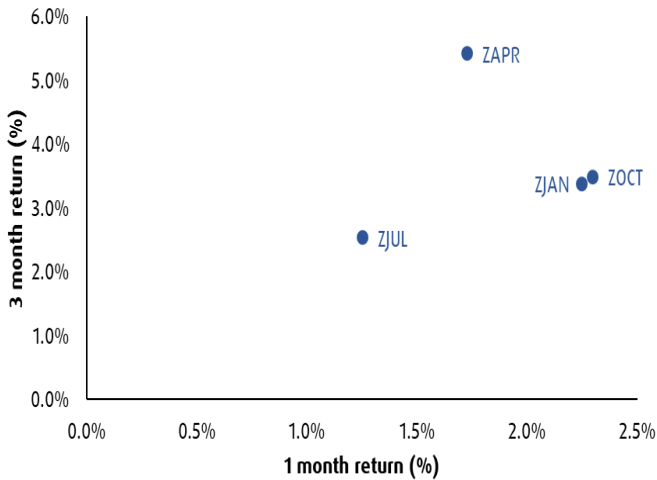
Enhanced Income ETFs



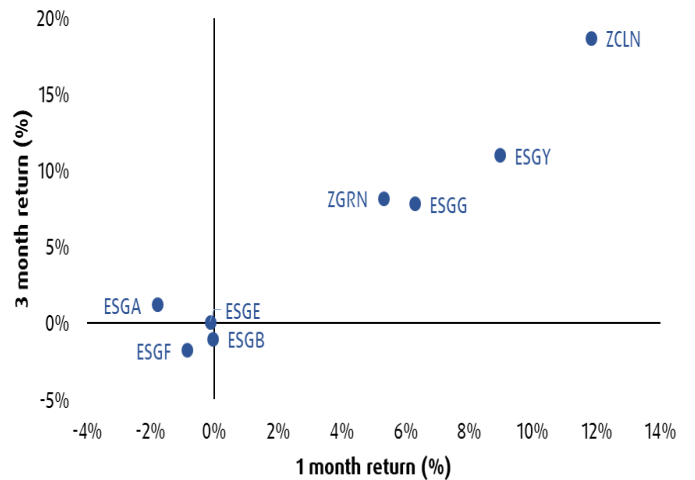
Sector ETFs



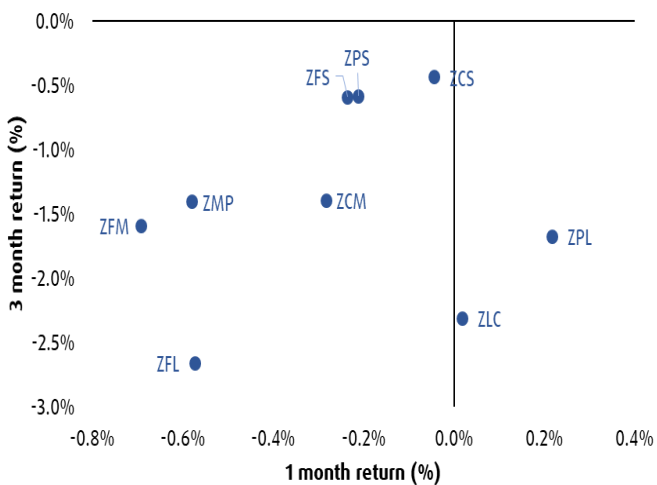
Structured Outcome



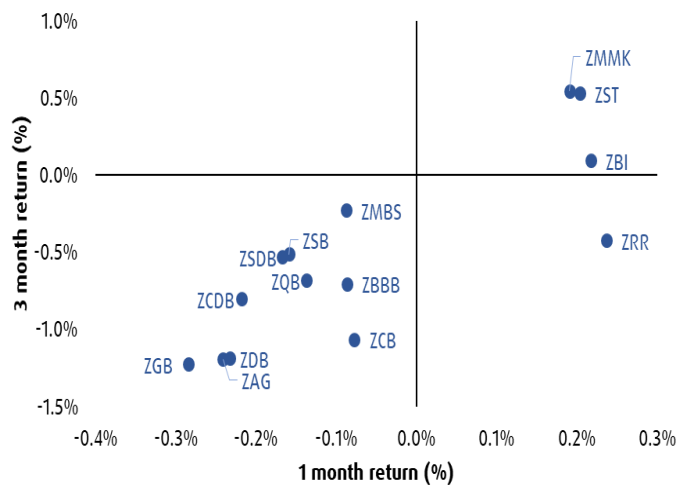
Sustainable Investing ETFs



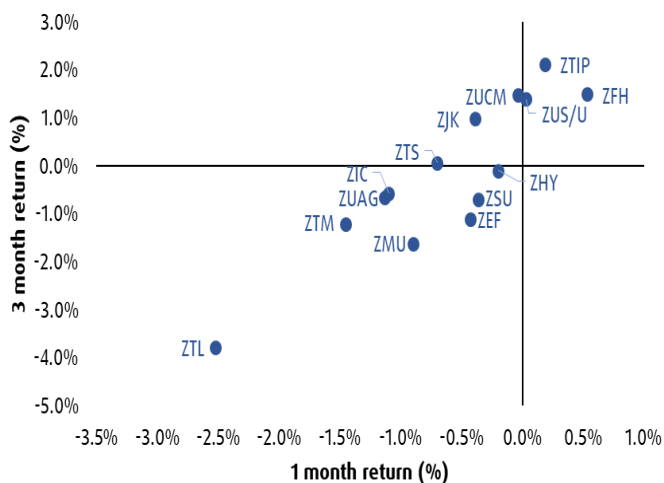
Canadian Precise Market



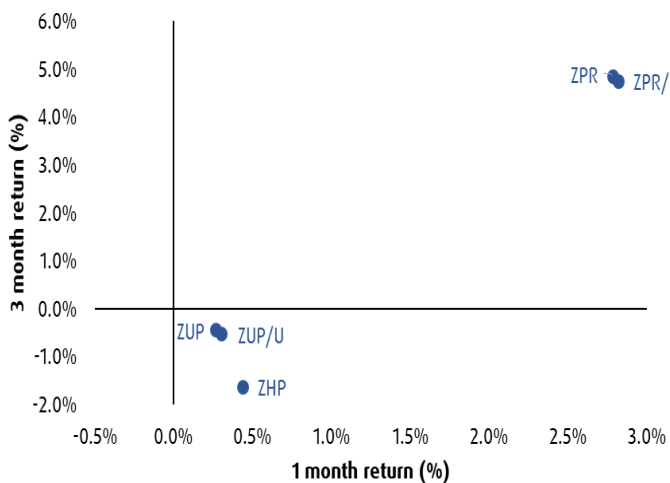
Canadian Fixed Income



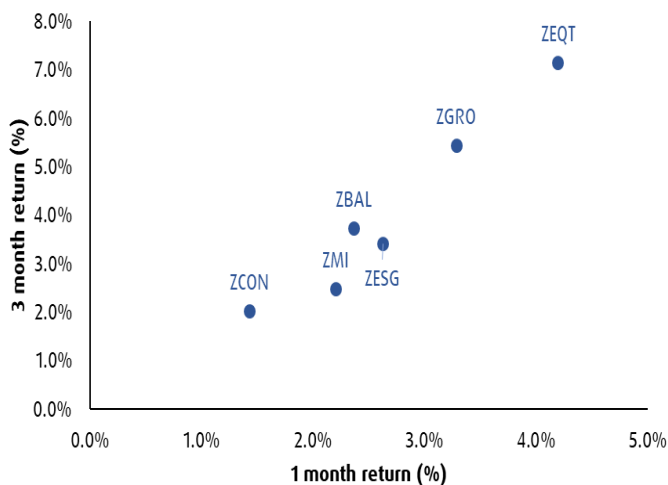
US/Global Fixed Income



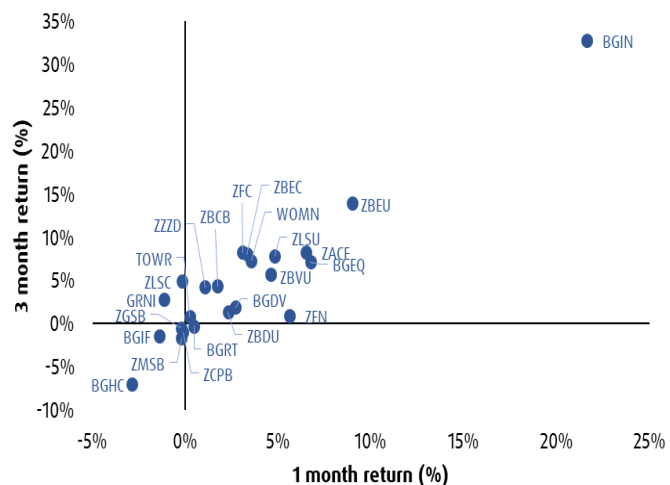
Preferred Shares



Asset Allocation ETFs

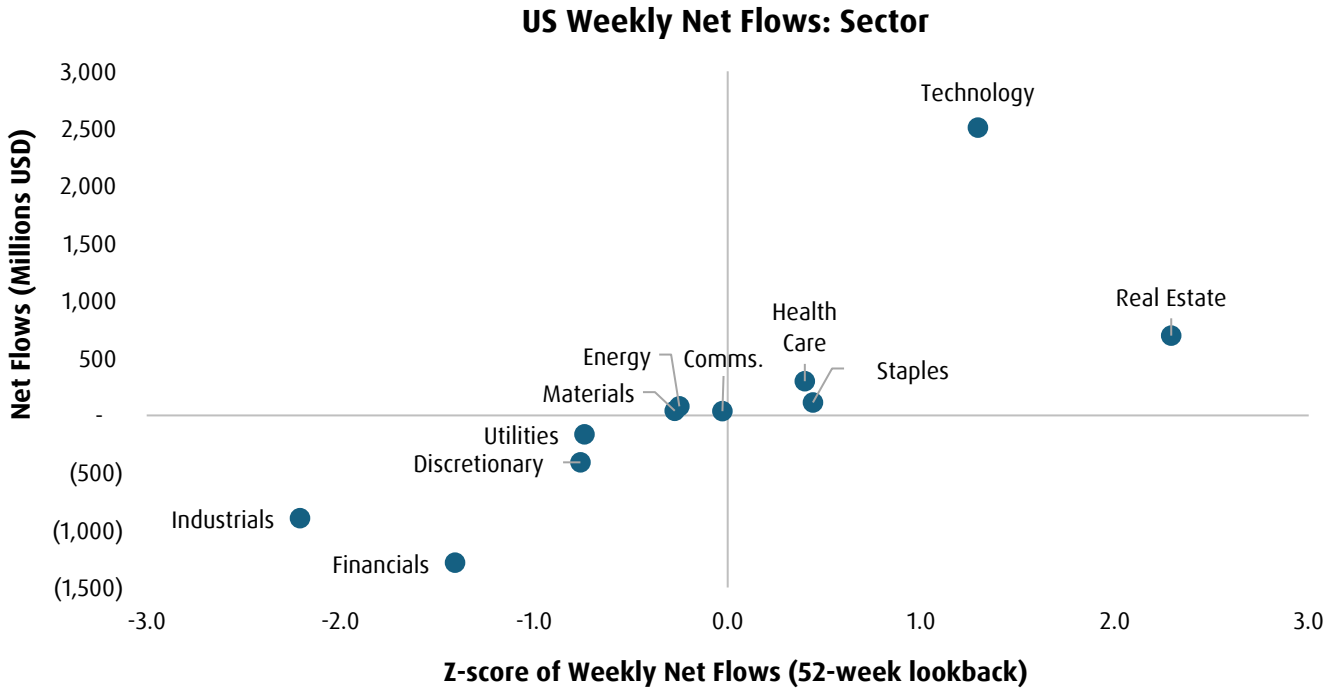


Alpha Seeking Strategies

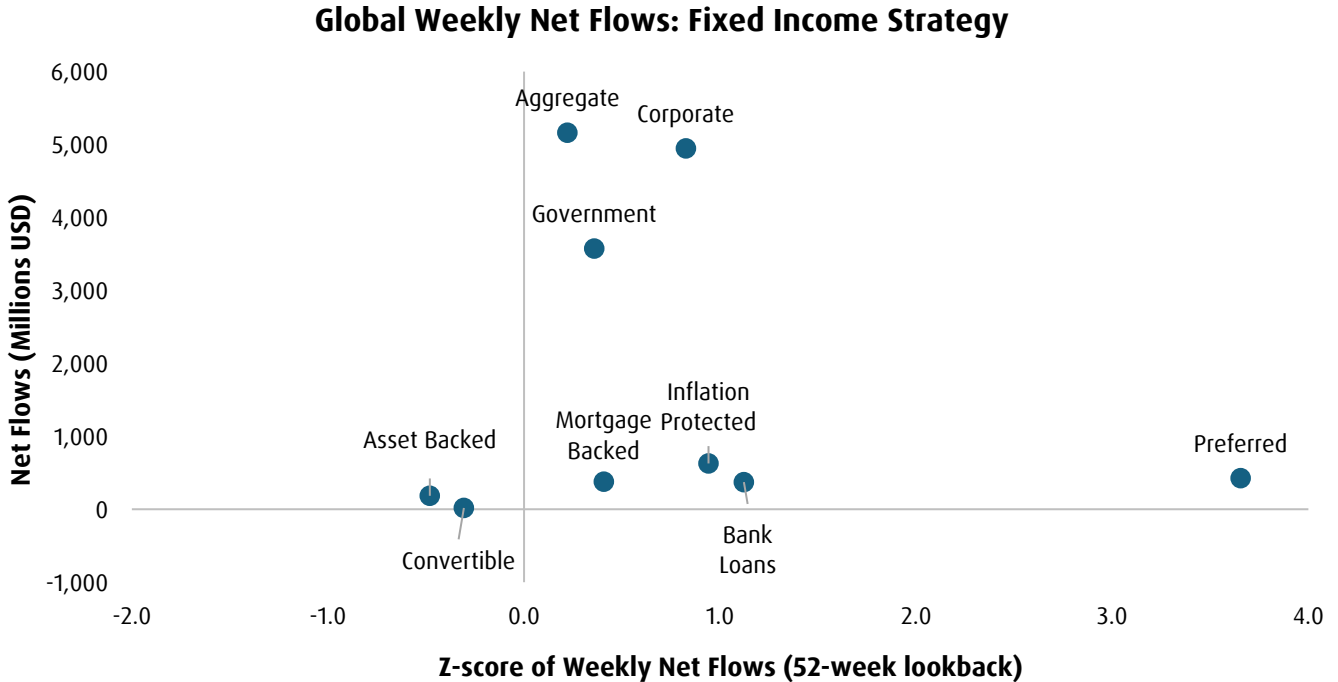


Global Weekly Flows

Note: All z-score calculations are based on a 52-week lookback period

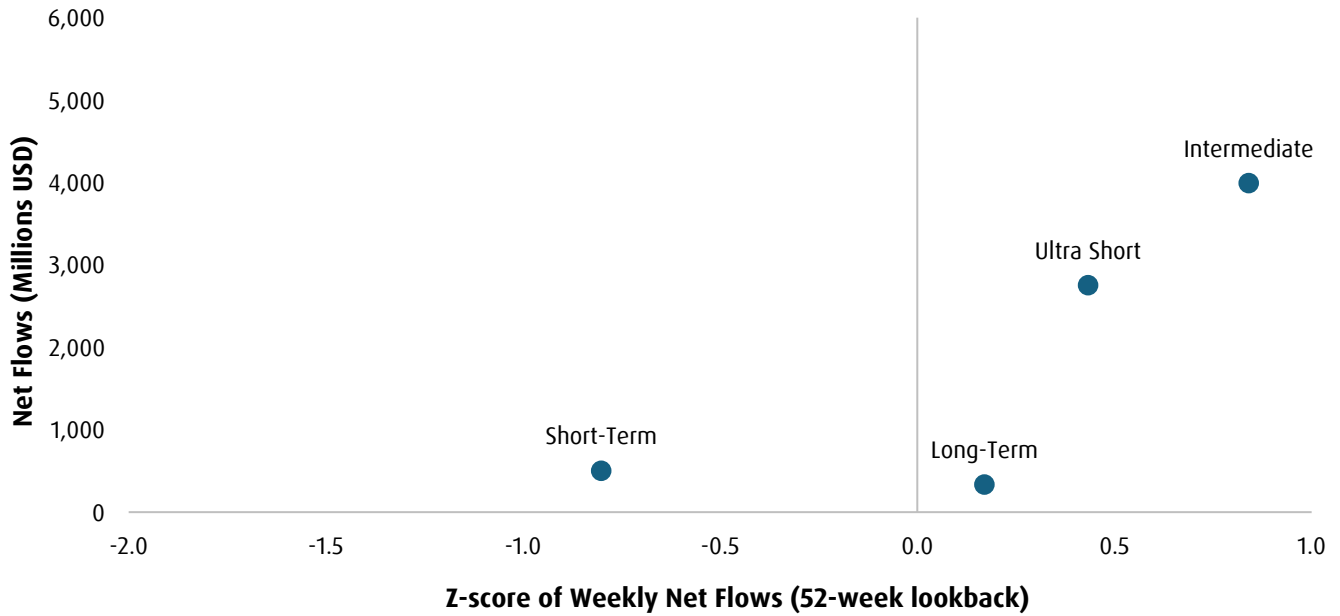


Source: BMO GAM, Bloomberg. Data as of 4 pm May 14, 2026



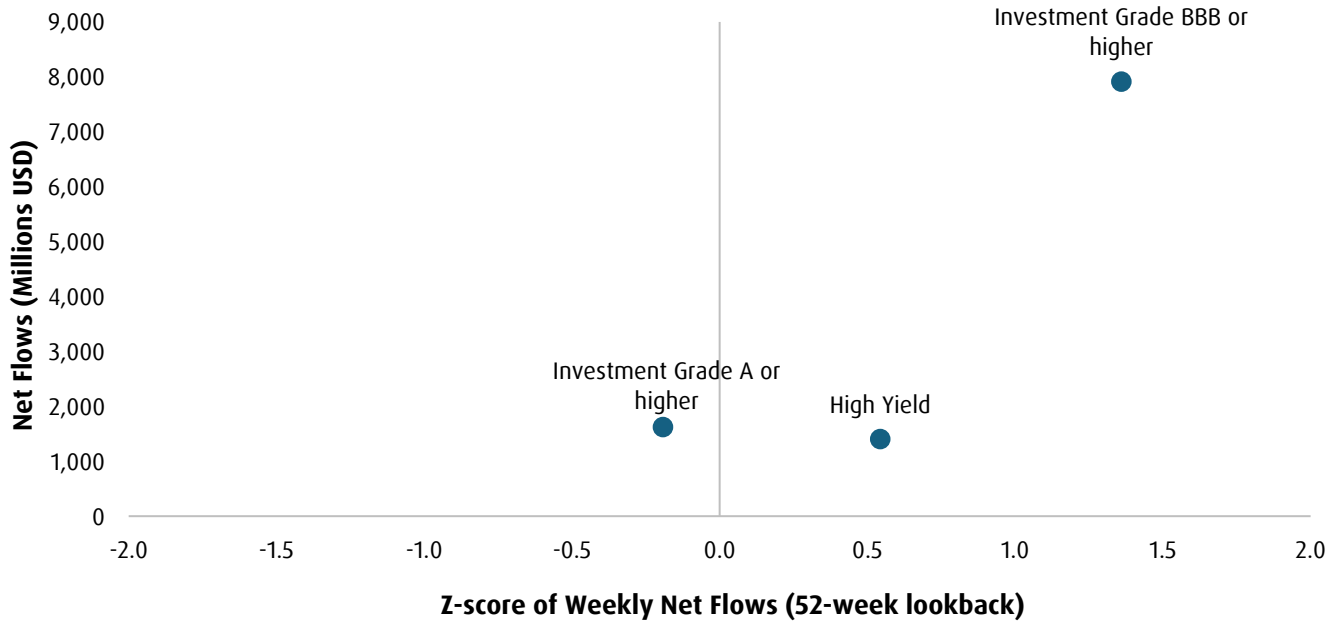
Source: BMO GAM, Bloomberg. Data as of 4 pm May 14, 2026

Global Weekly Net Flows: Maturity



Source: BMO GAM, Bloomberg. Data as of 4 pm May 14, 2026

Global Weekly Net Flows: Rating



Source: BMO GAM, Bloomberg. Data as of 4 pm May 14, 2026

BMO ETF Rankings

Data as of April 30, 2026

Top BMO Funds (Month)

Fund	Ticker	AUM [\$M]	Flows
BMO Aggregate Bond Index ETF	ZAG	12228.98	349.80
BMO S&P/TSX Capped Composite Index ETF	ZCN	15940.28	326.00
BMO MSCI EAFE Small-Mid Cap Idx ETFCAD	ZESM	294.09	284.70
BMO Gold Bullion ETF (CAD Units)	ZGLD	1840.43	262.00
BMO Money Market ETF	ZMMK	5786.78	260.40
BMO S&P 500 Index ETF	ZSP	22359.98	185.90
BMO MSCI Emerging Markets Index ETF	ZEM	3280.07	160.80
BMO NASDAQ 100 Equity ETF	ZNQ	2037.70	124.90
BMO Mid Corporate Bond Index ETF	ZCM	1404.87	119.90
BMO S&P 500 Index ETF	ZSP.U	3788.04	103.40

Top BMO Funds (Year)

Fund	Ticker	AUM [\$M]	Flows
BMO S&P/TSX Capped Composite ETF	ZCN	15940.28	2306.70
BMO Corporate Bond ETF	ZCB	1854.76	1730.10
BMO Aggregate Bond ETF	ZAG	12228.98	1582.40
BMO S&P 500 ETF (CAD)	ZSP	22359.98	1449.60
BMO MSCI Emerging Markets ETF	ZEM	3280.07	1331.80
BMO Global Equity Active ETF	BGEQ	2671.69	1323.20
BMO Money Market Fund ETF Series	ZMMK	5786.78	1045.60
BMO Broad Commodity ETF	ZCOM	1037.88	865.50
BMO US Aggregate Bond ETF Hedged Units	ZUAG.F	1331.71	852.90
BMO Gold Bullion ETF	ZGLD	1840.43	744.60

Market Performance

Source: BMO GAM, Bloomberg. Data as of 4 pm May 14, 2026

Regional Indices

US Equities	Current	1-day	5-day	MTD	QTD	YTD
S&P 500	7501.24	0.58%	2.24%	4.05%	14.90%	9.58%
Dow Jones	50063.46	-0.14%	0.94%	0.83%	8.03%	4.16%
Nasdaq	26635.22	1.20%	3.21%	7.00%	23.36%	14.60%
Russell 2000	2863.09	0.04%	0.83%	2.26%	14.69%	15.36%
S&P Midcap 400	3670.18	-0.25%	-0.32%	0.83%	8.70%	11.04%

Cdn Equities

S&P/TSX Composite	34268.27	-0.73%	1.22%	0.89%	4.58%	8.06%
S&P/TSX 60	1986.70	-0.81%	1.10%	0.20%	4.28%	6.81%

Eurozone Equities

Euro Stoxx 50	5934.96	1.26%	-0.63%	0.91%	6.56%	2.48%
FTSE 100	10372.93	0.46%	0.93%	-0.06%	1.93%	4.45%
DAX Index	24456.26	1.32%	-0.84%	0.67%	7.83%	-0.14%
CAC 40	8082.27	0.93%	-1.46%	-0.40%	3.39%	-0.82%
FTSE MIB	50050.27	1.15%	1.54%	3.74%	12.96%	11.36%
IBEX 35	17809.20	0.87%	-1.39%	0.16%	4.46%	2.90%

Asia/Pacific Equities

Nikkei	62654.05	-0.98%	-0.29%	5.68%	22.70%	24.46%
Topix	3879.27	-1.03%	1.01%	4.08%	10.90%	13.80%
Shanghai Composite	4177.92	-1.52%	-0.05%	1.60%	7.35%	5.27%
CSI 300	4914.60	-1.68%	0.29%	2.23%	10.44%	6.15%
Hang Seng	26389.04	0.00%	-0.89%	2.38%	6.46%	2.96%
Nifty 50	23689.60	1.18%	-2.62%	-1.28%	6.08%	-9.34%
S&P/ASX 200	8640.71	0.12%	-2.67%	-0.29%	1.87%	-0.84%

MSCI World

MSCI World	2584.63	0.57%	1.15%	3.59%	13.95%	9.71%
MSCI EM	1716.75	0.37%	-0.42%	7.28%	22.87%	22.24%

Sectors - S&P 500

	Current	1-day	5-day	MTD	QTD	YTD
Tech	6759.97	0.98%	5.66%	11.59%	31.06%	18.93%
Consumer Discretionary	1972.25	0.75%	-0.76%	0.98%	12.81%	2.27%
Industrials	1476.51	-0.43%	0.23%	-0.09%	7.80%	12.44%
Communications	507.60	2.65%	0.14%	1.99%	20.78%	12.20%
Consumer Staples	964.75	0.29%	1.63%	1.25%	4.23%	11.55%
Health Care	1707.33	0.63%	1.23%	0.40%	-0.18%	-5.46%
Energy	886.81	0.16%	3.74%	-2.57%	-5.99%	29.02%
Real Estate	278.91	-0.90%	-0.90%	-1.23%	7.28%	9.36%
Materials	649.00	0.00%	0.93%	0.71%	3.37%	12.99%
Financials	852.00	-1.07%	-0.57%	-1.72%	3.62%	-6.54%
Utilities	455.56	-1.26%	-0.55%	-4.29%	-2.33%	5.01%

Fixed Income

Nominal Yields	1-month	3-month	6-month	12-month	2-year	5-year	10-year	30-year
US (%)	3.64	3.67	3.71	3.79	4.02	4.15	4.48	5.03
5-day chg (bps)	1.9	-0.7	1.4	5.5	10.6	11.2	9.6	6.6
Canada (%)		2.31	2.40	2.66	2.97	3.23	3.57	3.92
5-day chg (bps)		-0.1	-1.9	-0.9	3.2	5.5	4.4	2.7

Swaps (%)

	1-month	3-month	6-month	12-month	2-year	5-year	10-year	30-year
US	3.61	3.64	3.69	3.81	3.86	3.87	4.06	4.29
Canada	2.27	2.30	2.40	2.62	2.85	3.04	3.33	3.62
Eurozone	1.94	2.10	2.26	2.47	2.56	2.62	2.85	3.07
UK	3.74	3.82	3.98	4.23	4.33	4.35	4.59	4.98
Japan	0.74	0.87	0.94	1.10	1.40	1.90	2.42	3.30

Key benchmarks*

US	Current	OAS (bps)	1-day	MTD	QTD	YTD
Aggregate	2346.88	25.50	0.02%	-0.15%	-0.04%	-0.08%
Broad Corporate	3546.10	74.31	0.06%	0.11%	0.57%	0.03%
High Yield	2950.40	263.51	0.04%	0.04%	1.74%	1.23%
MBS	2347.71	20.84	0.04%	-0.16%	-0.10%	0.31%

Canada

FTSE Canada Universe Bond I	1206.13		0.11%	0.18%	0.30%	0.53%
Aggregate	242.10	36.86	0.12%	0.18%	0.30%	0.49%
Corporate	284.74	86.63	0.11%	0.12%	0.52%	0.62%

FX and Commodities

	Spot	1-day	5-day	1-month	3-month	YTD
USD/CAD	1.372	0.09%	0.40%	-0.52%	1.06%	-0.03%
EUR/USD	1.1669	-0.36%	-0.49%	-0.77%	-1.71%	-0.66%
USD/JPY	158.37	0.32%	0.92%	-0.68%	3.33%	1.06%
GBP/USD	1.3403	-0.89%	-1.12%	-0.76%	-1.65%	-0.53%
USD/CHF	0.7837	0.22%	0.45%	-0.01%	1.57%	-1.12%
AUD/USD	0.7221	-0.51%	0.17%	1.78%	1.32%	8.21%
USD/MXN	17.2203	0.28%	-0.52%	-0.49%	0.23%	-4.37%
USD/BRL	4.9818	-0.60%	1.17%	-0.30%	-3.91%	-9.01%
USD/CNH	6.7867	-0.01%	-0.32%	-0.48%	-1.78%	-2.71%
WTI	101.17	0.15%	6.71%	2.11%	56.54%	76.19%
Brent	105.72	0.09%	5.66%	6.40%	52.33%	73.74%
Natural Gas	2.89	1.05%	4.51%	10.16%	-8.39%	-21.49%
Gold	4651.98	-0.78%	-0.72%	-1.86%	-8.50%	7.70%
Silver	83.53	-4.60%	6.46%	10.47%	-0.89%	16.55%

Month-to-Date Performance

Data as of 4 pm May 14, 2026

Top 10 ETF Performance	Ticker	MTD (%)	Bottom 10 ETF Performance	Ticker	MTD (%)
BMO Global Innovators Fund Active ETF Series	BGIN	12.2%	BMO Equal Weight US Banks Hedged to CAD Index ETF	ZUB	-4.6%
BMO MSCI USA Value Index ETF	ZVU	11.4%	BMO Covered Call US Banks ETF	ZWK	-3.5%
BMO Equal Weight Global Gold Index ETF	ZGD	10.5%	BMO Equal Weight US Banks Index ETF	ZBK	-3.5%
BMO Junior Gold Index ETF	ZJG	9.9%	BMO Global Agriculture ETF	ZEAT	-3.2%
BMO Nasdaq 100 Equity Index ETF	ZNQ	8.9%	BMO Equal Weight REITs Index	ZRE	-1.4%
BMO Nasdaq 100 Equity Index ETF (USD Units)	ZNQ/U	8.6%	BMO MSCI India Selection Equity Index ETF	ZID	-1.2%
BMO Equal Weight Global Base Metals Hedged to CAD Index ETF	ZMT	8.6%	BMO Global Infrastructure Fund Active ETF Series	BGIF	-0.9%
BMO Low Volatility Emerging Markets Equity ETF	ZLE	8.1%	BMO MSCI Canada Selection Equity Index ETF	ESGA	-0.9%
BMO Nasdaq 100 Equity Hedged to CAD Index ETF	ZQQ	7.8%	BMO Covered Call Energy ETF	ZWEN	-0.8%
BMO Clean Energy Index ETF	ZCLN	7.7%	BMO Low Volatility International Equity ETF (Hedged Units)	ZLD	-0.8%

Broad Based Equity ETFs

Performance as of April 30, 2026

Name	Ticker	Inception Date	YTD (%)	1 MO (%)	3 MO (%)	6 MO (%)	1 YR (%)	3 YR (%)	5 YR (%)	10 YR (%)	Since Inception (%)
BMO Japan Index ETF (Hedged Units)	ZJPN.F	01/24/2022	5.70	-7.82	5.70	15.66	37.33	27.03	-	-	21.79
BMO MSCI Emerging Markets Index ETF	ZEM	10/20/2009	3.54	-9.06	3.54	6.49	28.02	16.00	5.66	8.49	6.05
BMO S&P/TSX Capped Composite Index ETF	ZCN	05/29/2009	3.94	-4.30	3.94	10.40	34.73	21.09	15.12	12.56	9.72
BMO Japan Index ETF	ZJPN	01/24/2022	5.42	-7.57	5.42	7.23	23.78	17.36	-	-	11.91
BMO S&P/TSX 60 Index ETF	ZIU	09/27/2023	3.05	-3.11	3.05	8.90	30.52	-	-	-	24.84
BMO MSCI EAFE Index ETF	ZEA	02/10/2014	2.08	-6.64	2.08	4.93	18.21	15.02	10.28	9.27	8.39
BMO MSCI EAFE Hedged to CAD Index ETF	ZDM	10/20/2009	1.94	-6.36	1.94	7.32	18.29	14.65	11.21	10.40	8.26
BMO Nasdaq 100 Equity Index ETF (USD Units)	ZNQ.U	02/11/2021	-5.93	-4.85	-5.93	-3.72	23.43	22.02	12.97	-	11.58

BMO NASDAQ 100 Equity Hedged to CAD Index ETF	ZQQ	01/19/2010	-6.44	-5.08	-6.44	-4.66	21.05	20.28	11.60	17.26	16.49
BMO S&P US Small Cap Index ETF (USD Units)	ZSML.U	02/05/2020	3.48	-4.02	3.48	5.11	20.04	10.07	4.04	-	7.90
BMO S&P US Mid Cap Index ETF (USD Units)	ZMID.U	02/05/2020	2.41	-5.42	2.41	4.00	16.94	11.66	6.48	-	9.45
BMO S&P 500 Index ETF (USD Units)	ZSP.U	11/14/2012	-4.42	-4.99	-4.42	-1.94	17.50	17.96	11.72	13.76	14.10
BMO S&P US Small Cap Index ETF (Hedged Units)	ZSML.F	02/05/2020	2.83	-4.29	2.83	3.86	17.71	8.35	2.74	-	6.16
BMO S&P US Mid Cap Index ETF (Hedged Units)	ZMID.F	02/05/2020	1.77	-5.69	1.77	2.78	14.64	9.96	5.16	-	7.76
BMO S&P 500 Hedged to CAD Index ETF	ZUE	05/29/2009	-4.93	-5.22	-4.93	-2.91	15.29	16.27	10.37	12.41	12.88
BMO NASDAQ 100 Equity Index ETF	ZNQ	02/12/2019	-4.66	-2.97	-4.66	-3.76	19.32	23.20	15.29	-	19.86
BMO Dow Jones Industrial Average Hedged to CAD Index ETF	ZDJ	05/29/2009	-3.82	-5.48	-3.82	-0.58	9.56	11.55	7.21	10.50	11.55
BMO S&P US Small Cap Index ETF	ZSML	02/05/2020	4.88	-2.12	4.88	5.07	16.05	11.14	6.17	-	8.70
BMO S&P US Mid Cap Index ETF	ZMID	02/05/2020	3.80	-3.54	3.80	3.96	13.05	12.74	8.66	-	10.26
BMO S&P 500 Index ETF	ZSP	11/14/2012	-3.13	-3.10	-3.13	-1.98	13.58	19.10	14.01	14.54	16.90
BMO MSCI China Selection Equity Index ETF	ZCH	01/19/2010	-7.65	-3.30	-7.65	-17.87	0.04	7.50	-8.37	1.37	2.69
BMO MSCI India Selection Equity Index ETF	ZID	01/19/2010	-17.94	-11.67	-17.94	-15.69	-16.25	4.20	3.60	9.40	6.95

Factor ETFs*Performance as of April 30, 2026*

Name	Ticker	Inception Date	YTD (%)	1 MO (%)	3 MO (%)	6 MO (%)	1 YR (%)	3 YR (%)	5 YR (%)	10 YR (%)	Since Inception (%)
BMO MSCI Canada Value Index ETF	ZVC	10/04/2017	6.84	-1.52	6.84	15.90	39.27	20.16	16.62	-	11.74
BMO Canadian Dividend ETF	ZDV	10/21/2011	10.70	-1.09	10.70	17.77	36.92	20.25	15.66	11.76	9.64
BMO Low Volatility Emerging Markets Equity ETF	ZLE	05/10/2016	4.12	-6.62	4.12	6.69	20.72	13.77	4.98	-	3.74
BMO MSCI USA Value Index ETF	ZVU	10/04/2017	5.81	-3.40	5.81	14.54	31.09	18.74	11.26	-	10.93
BMO International Dividend ETF	ZDI	11/05/2014	6.41	-4.96	6.41	11.70	21.72	16.94	13.33	9.39	8.45
BMO International Dividend Hedged to CAD ETF	ZDH	09/02/2015	6.53	-4.73	6.53	14.43	22.05	16.31	13.78	10.38	9.71
BMO Low Volatility Canadian Equity Fund	ZLB	10/21/2011	1.45	-2.72	1.45	6.90	20.24	14.48	12.83	10.67	12.66
BMO US Dividend ETF (USD Units)	ZDY.U	03/19/2013	4.01	-3.59	4.01	6.70	17.92	14.45	10.36	10.01	10.62
BMO Low Volatility US Equity Fund	ZLU.U	03/19/2013	5.70	-5.48	5.70	5.01	9.02	9.76	8.87	9.10	10.92
BMO MSCI EAFE High Quality Index ETF	ZIQ	10/24/2024	-0.28	-8.21	-0.28	1.79	10.17	-	-	-	7.17
BMO MSCI USA High Quality Index ETF (USD Units)	ZUQ.U	07/17/2020	-3.76	-6.43	-3.76	0.11	14.80	19.08	11.88	-	14.00
BMO US Dividend Hedged to CAD ETF	ZUD	03/19/2013	3.68	-3.59	3.68	5.83	15.32	12.90	9.25	8.85	9.73
BMO Low Volatility US Equity Hedged to CAD ETF	ZLH	02/04/2016	5.23	-5.53	5.23	4.04	7.01	8.44	7.93	8.10	8.78
BMO MSCI All Country World High Quality Index ETF	ZGQ	11/05/2014	-0.95	-5.83	-0.95	1.76	14.93	18.67	12.39	13.98	13.93
BMO Low Volatility International Equity Fund	ZLI	09/02/2015	2.50	-5.41	2.50	1.59	6.88	10.33	6.76	5.82	6.26

BMO MSCI USA High Quality Index ETF (Hedged Units)	ZUQ.F	07/17/2020	-4.30	-6.68	-4.30	-0.94	12.56	17.40	10.58	-	12.66
BMO Low Volatility International Equity Hedged to CAD ETF	ZLD	02/04/2016	2.65	-5.11	2.65	4.02	6.90	9.59	7.18	6.54	6.72
BMO US Dividend ETF	ZDY	03/19/2013	5.42	-1.68	5.42	6.65	13.98	15.55	12.62	10.76	13.23
BMO Low Volatility US Equity Fund	ZLU	03/19/2013	7.13	-3.61	7.13	4.96	5.39	10.82	11.10	9.85	13.53
BMO MSCI USA High Quality Index ETF	ZUQ	11/05/2014	-2.46	-4.58	-2.46	0.07	10.98	20.23	14.18	15.53	15.75
BMO MSCI Europe High Quality Hedged to CAD Index ETF	ZEQ	02/10/2014	-1.75	-7.68	-1.75	0.81	1.76	4.08	5.54	8.41	8.38

Enhanced Income ETFs

Performance as of April 30, 2026

Name	Ticker	Inception Date	YTD (%)	1 MO (%)	3 MO (%)	6 MO (%)	1 YR (%)	3 YR (%)	5 YR (%)	10 YR (%)	Since Inception (%)
BMO Covered Call Canadian Banks Fund	ZWB.U	01/24/2022	0.18	-5.31	0.18	13.29	47.21	18.76	-	-	7.97
BMO Covered Call Canadian Banks ETF	ZWB	01/28/2011	1.53	-3.43	1.53	13.24	42.30	19.91	12.69	11.26	10.11
BMO Canadian High Dividend Covered Call Fund	ZWC	02/03/2017	6.47	-1.91	6.47	12.89	27.28	15.09	11.80	-	8.03
BMO Covered Call Utilities Fund	ZWU	10/20/2011	11.77	0.75	11.77	9.71	17.07	10.57	7.33	6.47	5.72
BMO Covered Call Energy Fund	ZWEN	01/23/2023	31.99	12.30	31.99	30.95	29.82	18.73	-	-	15.58
BMO Europe High Dividend Covered Call Fund	ZWP	03/02/2018	-0.93	-6.81	-0.93	2.74	10.40	11.89	10.71	-	7.07
BMO Global Enhanced Income Fund ETF Series	ZWQT	06/21/2023	3.35	-1.80	3.35	7.01	15.81	-	-	-	15.10
BMO US High Dividend Covered Call Fund	ZWH.U	02/06/2015	2.14	-3.54	2.14	4.72	13.01	9.72	7.52	8.33	8.13

BMO Covered Call Technology Fund	ZWT	01/20/2021	-7.49	-2.25	-7.49	-5.28	22.40	29.69	17.89	-	17.49
BMO Global High Dividend Covered Call ETF	ZWG	01/16/2020	2.35	-2.85	2.35	6.31	11.36	13.46	9.71	-	9.18
BMO US High Dividend Covered Call Hedged to CAD ETF	ZWS	03/02/2018	1.76	-3.62	1.76	3.79	10.78	8.30	6.47	-	6.82
BMO Europe High Dividend Covered Call Hedged to CAD ETF	ZWE	09/02/2015	-0.53	-6.03	-0.53	4.18	7.67	8.85	9.19	8.31	7.61
BMO Covered Call Dow Jones Industrial Average Hedged to CAD ETF	ZWA	10/20/2011	-4.05	-5.04	-4.05	-0.71	8.08	9.69	6.31	9.05	9.48
BMO US Put Write ETF (USD Units)	ZPW.U	09/02/2015	-3.49	-2.85	-3.49	-0.24	8.09	8.59	6.42	4.80	4.71
BMO Covered Call US Banks ETF	ZWK	02/12/2019	-2.77	-1.02	-2.77	2.30	18.52	21.68	5.26	-	5.89
BMO Premium Yield Fund	ZPAY.U	01/15/2020	-2.91	-3.20	-2.91	-0.44	7.67	7.98	5.26	-	6.27
BMO US High Dividend Covered Call Fund	ZWH	02/10/2014	3.52	-1.63	3.52	4.68	9.24	10.78	9.72	9.07	10.71
BMO US Put Write Hedged to CAD ETF	ZPH	02/03/2017	-3.84	-2.91	-3.84	-1.14	5.96	7.22	5.44	-	3.77
BMO Premium Yield Fund	ZPAY.F	01/15/2020	-3.26	-3.30	-3.26	-1.34	5.58	6.68	4.37	-	5.31
BMO US Put Write ETF	ZPW	09/02/2015	-2.19	-0.92	-2.19	-0.29	4.49	9.64	8.60	5.48	5.13
BMO Premium Yield Fund	ZPAY	01/15/2020	-1.60	-1.28	-1.60	-0.48	4.10	9.03	7.43	-	7.37
BMO Covered Call Health Care ETF	ZWHC	01/23/2023	-3.83	-5.77	-3.83	3.18	-5.61	4.00	-	-	3.05

Sector ETFs

Performance as of April 30, 2026

Name	Ticker	Inception Date	YTD (%)	1 MO (%)	3 MO (%)	6 MO (%)	1 YR (%)	3 YR (%)	5 YR (%)	10 YR (%)	Since Inception (%)
BMO Equal Weight Global Gold Index ETF	ZGD	11/14/2012	11.83	-18.62	11.83	31.79	124.27	57.28	35.96	21.51	11.49

BMO Junior Gold Index ETF	ZJG	01/19/2010	12.23	-20.33	12.23	28.47	119.52	53.33	32.84	20.90	6.93
BMO Equal Weight Global Base Metals Hedged to CAD Index ETF	ZMT	10/20/2009	9.39	-13.86	9.39	27.16	88.15	28.18	17.15	15.64	4.00
BMO Gold Bullion ETF (USD Units)	ZGLD.U	03/04/2024	5.45	-11.77	5.45	20.34	47.59	-	-	-	47.32
BMO Gold Bullion Fund	ZGLH	03/05/2024	4.85	-11.91	4.85	19.03	44.28	-	-	-	43.58
BMO Gold Bullion ETF	ZGLD	03/04/2024	6.88	-10.02	6.88	20.29	42.67	-	-	-	49.24
BMO Equal Weight Banks Index ETF	ZEB	10/20/2009	1.95	-3.83	1.95	14.69	52.21	25.63	16.90	14.60	12.80
BMO Equal Weight Industrials Index ETF	ZIN	11/14/2012	7.78	-3.16	7.78	13.21	40.73	15.68	11.09	13.03	11.93
BMO Equal Weight Oil & Gas Index ETF	ZEO	10/20/2009	31.75	11.12	31.75	32.39	41.39	26.20	28.74	11.38	5.77
BMO Equal Weight Utilities Index ETF	ZUT	01/19/2010	15.48	3.16	15.48	16.49	31.13	12.24	7.08	10.74	8.70
BMO Equal Weight REITs Index ETF	ZRE	05/19/2010	1.67	-5.07	1.67	0.70	10.17	5.31	3.88	6.74	7.79
BMO Equal Weight US Banks Hedged to CAD Index ETF	ZUB	05/19/2010	-4.19	-3.34	-4.19	2.22	21.21	22.53	4.67	10.06	7.76
BMO Global Infrastructure Index ETF	ZGI	01/19/2010	15.08	0.83	15.08	11.96	11.31	14.12	12.91	9.83	11.94
BMO Global Consumer Staples Hedged to CAD Index ETF	STPL	04/03/2017	2.09	-9.21	2.09	3.15	0.52	2.54	4.16	-	4.48
BMO Global Agriculture ETF	ZEAT	01/23/2023	16.14	-1.24	16.14	9.95	10.89	1.17	-	-	-0.05
BMO Global Communications Index ETF	COMM	05/02/2018	-0.44	-2.67	-0.44	-3.62	12.63	21.02	11.11	-	12.60
BMO Equal Weight US Banks Index ETF	ZBK	02/10/2014	-2.28	-1.12	-2.28	3.50	19.65	25.80	8.24	12.57	10.98
BMO Equal Weight US Health Care Hedged to CAD Index ETF	ZUH	05/19/2010	-4.76	-7.31	-4.76	2.65	4.05	-1.64	-1.54	5.90	10.30

BMO Global Consumer Discretionary Hedged to CAD Index ETF	DISC	04/03/2017	-6.90	-6.87	-6.90	-7.91	7.24	11.95	5.82	-	10.04
BMO Equal Weight US Health Care Index ETF	ZHU	02/12/2019	-2.97	-5.20	-2.97	3.54	2.37	0.89	1.77	-	5.59

Structured Outcome ETFs

Performance as of April 30, 2026

Name	Ticker	Inception Date	YTD (%)	1 MO (%)	3 MO (%)	6 MO (%)	1 YR (%)	3 YR (%)	5 YR (%)	10 YR (%)	Since Inception (%)
BMO US Equity Buffer Hedged to CAD ETF – July	ZJUL	06/27/2024	-0.83	-1.30	-0.83	0.45	10.02	-	-	-	7.41
BMO US Equity Buffer Hedged to CAD ETF – January	ZJAN	01/24/2024	-1.75	-2.10	-1.75	0.09	8.26	-	-	-	7.43
BMO US Equity Buffer Hedged to CAD ETF – October	ZOCT	09/27/2023	-1.69	-2.10	-1.69	0.35	8.15	-	-	-	7.96
BMO US Equity Buffer Hedged to CAD ETF – April	ZAPR	03/26/2024	0.93	0.40	0.93	2.09	7.86	-	-	-	7.18

Sustainable Investing ETFs

Performance as of April 30, 2026

Name	Ticker	Inception Date	YTD (%)	1 MO (%)	3 MO (%)	6 MO (%)	1 YR (%)	3 YR (%)	5 YR (%)	10 YR (%)	Since Inception (%)
BMO Clean Energy Index Fund	ZCLN	01/20/2021	12.17	1.44	12.17	18.16	57.16	-0.41	-1.93	-	-6.79
BMO MSCI Canada Selection Equity Index ETF	ESGA	01/15/2020	0.13	-5.10	0.13	4.77	30.27	20.60	12.54	-	12.44
BMO MSCI EAFE Selection Equity Index ETF	ESGE	01/16/2020	1.26	-6.81	1.26	3.48	15.09	12.43	8.48	-	7.79
BMO MSCI USA Selection Equity Index ETF	ESGY.F	01/20/2021	-6.56	-5.92	-6.56	-3.53	17.15	16.11	10.19	-	10.58
BMO MSCI Global Selection Equity Index ETF	ESGG	01/16/2020	-3.20	-4.61	-3.20	-0.91	15.85	17.25	12.24	-	12.11
BMO MSCI USA Selection Equity Index ETF	ESGY	01/15/2020	-4.77	-3.79	-4.77	-2.55	15.50	18.92	13.78	-	14.17

BMO MSCI ACWI Paris Aligned Climate Equity Index ETF	ZGRN	01/24/2022	-4.10	-4.38	-4.10	-3.16	12.65	15.85	-	-	11.00
BMO ESG Corporate Bond Index ETF	ESGB	01/15/2020	0.02	-1.65	0.02	0.35	2.59	5.45	1.95	-	2.09
BMO ESG US Corporate Bond Hedged to CAD Index ETF	ESGF	01/15/2020	-1.02	-2.17	-1.02	-0.84	2.51	2.91	-0.64	-	-0.20

Canadian Precise Market

Performance as of April 30, 2026

Name	Ticker	Inception Date	YTD (%)	1 MO (%)	3 MO (%)	6 MO (%)	1 YR (%)	3 YR (%)	5 YR (%)	10 YR (%)	Since Inception (%)
BMO Mid Corporate Bond Index ETF	ZCM	01/19/2010	0.20	-2.08	0.20	0.24	3.36	5.96	2.30	3.09	4.13
BMO Short Corporate Bond Index ETF	ZCS	10/20/2009	0.18	-0.94	0.18	0.72	3.27	5.52	2.69	2.76	2.97
BMO Short Corporate Bond Index ETF (Accumulating Units)	ZCS.L	02/03/2017	0.18	-0.94	0.18	0.72	3.27	5.52	2.69	-	2.79
BMO Mid Provincial Bond Index ETF	ZMP	03/19/2013	0.31	-2.12	0.31	0.06	2.02	3.87	1.30	1.89	2.50
BMO Short Provincial Bond Index ETF	ZPS	10/20/2009	0.20	-0.97	0.20	0.35	1.87	3.69	1.58	1.66	2.09
BMO Short Provincial Bond Index ETF (Accumulating Units)	ZPS.L	02/03/2017	0.20	-0.97	0.20	0.35	1.87	3.70	1.58	-	1.77
BMO Long Corporate Bond Index ETF	ZLC	01/19/2010	-0.36	-3.46	-0.36	-0.50	0.22	4.79	0.51	2.66	4.67
BMO Short Federal Bond Index ETF	ZFS	10/20/2009	0.22	-0.93	0.22	0.37	1.65	3.35	1.35	1.30	1.66
BMO Short Federal Bond Index ETF (Accumulating)	ZFS.L	02/03/2017	0.21	-0.93	0.21	0.36	1.64	3.34	1.35	-	1.44
BMO Mid Federal Bond Index ETF	ZFM	05/29/2009	0.36	-2.07	0.36	-0.32	0.58	2.42	0.15	0.71	2.41

BMO Long Provincial Bond Index ETF	ZPL	03/19/2013	-0.25	-3.68	-0.25	-1.63	-2.57	1.11	-2.14	0.68	1.82
BMO Long Federal Bond Index ETF	ZFL	05/19/2010	0.29	-3.98	0.29	-2.70	-7.05	-1.62	-4.15	-1.28	1.82

Canadian Fixed Income

Performance as of April 30, 2026

Name	Ticker	Inception Date	YTD (%)	1 MO (%)	3 MO (%)	6 MO (%)	1 YR (%)	3 YR (%)	5 YR (%)	10 YR (%)	Since Inception (%)
BMO Canadian Bank Income Index ETF	ZBI	02/07/2022	0.56	-0.63	0.56	1.54	4.96	7.88	-	-	4.07
BMO BBB Corporate Bond Index ETF	ZBBB	02/05/2020	0.27	-1.33	0.27	0.72	3.68	5.97	2.75	-	2.96
BMO Corporate Discount Bond ETF	ZCDB	01/24/2022	0.19	-1.27	0.19	0.39	3.11	5.53	-	-	3.18
BMO High Quality Corporate Bond Index ETF	ZQB	02/05/2020	0.12	-1.18	0.12	0.49	2.99	5.34	2.38	-	2.53
BMO Corporate Bond Index ETF	ZCB	03/02/2018	0.05	-1.75	0.05	0.33	2.48	5.38	1.95	-	2.82
BMO Short-Term Bond Index ETF	ZSB	03/02/2018	0.23	-0.91	0.23	0.54	2.34	4.23	1.92	-	2.31
BMO Short-Term Discount Bond ETF	ZSDB	01/24/2022	0.22	-0.92	0.22	0.47	2.26	4.41	-	-	2.72
BMO Canadian MBS Index ETF	ZMBS	02/05/2020	0.40	-0.66	0.40	0.90	2.44	3.97	1.84	-	2.07
BMO Ultra Short-Term Bond Fund	ZST	01/28/2011	0.57	0.16	0.57	1.23	2.77	4.33	3.10	2.46	2.21
BMO Ultra Short-Term Bond Fund	ZST.L	02/03/2017	0.56	0.16	0.56	1.23	2.77	4.33	3.10	-	2.51
BMO Money Market Fund ETF Series	ZMMK	11/29/2021	0.57	0.20	0.57	1.19	2.60	4.01	-	-	3.49
BMO Aggregate Bond Index ETF	ZAG	01/19/2010	0.19	-2.01	0.19	-0.15	0.75	3.42	0.64	1.66	2.80
BMO Discount Bond Index ETF	ZDB	02/10/2014	0.12	-1.98	0.12	-0.34	0.34	3.23	0.50	1.59	2.23

BMO Government Bond Index ETF	ZGB	03/02/2018	0.22	-2.08	0.22	-0.37	0.03	2.61	0.05	-	1.43
BMO Real Return Bond Index ETF	ZRR	05/19/2010	1.11	-2.35	1.11	-1.02	-1.97	2.09	-0.25	1.08	2.54

US/Global Fixed Income

Performance as of April 30, 2026

Name	Ticker	Inception Date	YTD (%)	1 MO (%)	3 MO (%)	6 MO (%)	1 YR (%)	3 YR (%)	5 YR (%)	10 YR (%)	Since Inception (%)
BMO Mid-Term US IG Corporate Bond Index ETF (USD Units)	ZIC.U	03/19/2013	-0.60	-2.07	-0.60	0.56	5.76	5.37	1.32	2.90	2.85
BMO High Yield US Corporate Bond Index ETF (USD Units)	ZJK.U	02/11/2021	-0.65	-1.29	-0.65	0.73	6.83	8.03	3.51	-	3.28
BMO Mid-Term US Treasury Bond Index ETF (USD Units)	ZTM.U	02/21/2017	-0.17	-2.09	-0.17	0.83	3.99	2.79	-0.17	-	1.31
BMO Emerging Markets Bond Hedged to CAD Index ETF	ZEF	05/21/2010	-1.45	-2.38	-1.45	0.47	4.11	5.85	0.28	1.46	3.49
BMO US Aggregate Bond Index ETF (USD Units)	ZUAG.U	01/23/2023	0.02	-1.76	0.02	0.99	4.32	3.44	-	-	3.31
BMO Mid-Term US IG Corporate Bond Hedged to CAD Index ETF	ZMU	03/20/2013	-1.03	-2.25	-1.03	-0.36	3.82	3.94	0.30	2.02	2.43
BMO Floating Rate High Yield ETF	ZFH	02/10/2014	-1.23	-0.70	-1.23	0.32	6.19	9.24	6.62	5.52	5.17
BMO Short-Term US Treasury Bond Index ETF (USD Units)	ZTS.U	02/21/2017	0.13	-0.80	0.13	1.20	3.69	3.69	1.22	-	1.65
BMO High Yield US Corporate Bond Hedged to CAD Index Fund	ZHY	10/20/2009	-1.10	-1.46	-1.10	-0.20	4.89	6.60	2.47	4.06	4.67
BMO Short-Term US TIPS Index ETF (USD Units)	ZTIP.U	01/20/2021	0.97	0.06	0.97	1.27	3.81	4.59	3.42	-	3.41

BMO Ultra Short-Term US Bond ETF (US Dollar Accumulating Units)	ZUS.V	02/12/2019	0.81	0.19	0.81	1.87	4.23	4.96	3.36	-	2.77
BMO Ultra Short-Term US Bond ETF (USD Units)	ZUS.U	02/12/2019	0.81	0.19	0.81	1.87	4.23	4.96	3.36	-	2.77
BMO US Aggregate Bond Index ETF (Hedged Units)	ZUAG.F	01/23/2023	-0.42	-1.95	-0.42	0.06	2.40	2.07	-	-	1.97
BMO USD Cash Management ETF (USD Units)	ZUCM.U	09/27/2023	0.85	0.29	0.85	1.83	3.96	-	-	-	4.64
BMO Short-Term US IG Corporate Bond Hedged to CAD Index ETF	ZSU	02/10/2014	-0.32	-1.01	-0.32	0.35	2.66	3.92	1.29	1.72	1.79
BMO Short-Term US TIPS Index ETF (Hedged Units)	ZTIP.F	01/20/2021	0.58	-0.09	0.58	0.39	1.95	3.32	2.59	-	2.61
BMO Long-Term US Treasury Bond Index ETF (USD Units)	ZTL.U	02/21/2017	-0.07	-4.16	-0.07	-0.80	-0.41	-2.74	-5.67	-	-1.02
BMO Mid-Term US IG Corporate Bond Index ETF	ZIC	03/19/2013	0.75	-0.13	0.75	0.52	2.23	6.38	3.39	3.62	5.32
BMO Long-Term US Treasury Bond Index ETF (Hedged Units)	ZTL.F	02/05/2020	-0.56	-4.41	-0.56	-1.74	-2.21	-4.22	-6.65	-	-5.94
BMO High Yield US Corporate Bond Index ETF	ZJK	10/04/2017	0.69	0.67	0.69	0.69	3.27	9.09	5.64	-	5.23
BMO Mid-Term US Treasury Bond Index ETF	ZTM	02/21/2017	1.18	-0.15	1.18	0.79	0.53	3.79	1.88	-	2.00
BMO US Aggregate Bond Index ETF	ZUAG	01/23/2023	1.37	0.19	1.37	0.94	0.84	4.43	-	-	4.58
BMO Short-Term US Treasury Bond Index ETF	ZTS	02/21/2017	1.48	1.17	1.48	1.16	0.23	4.69	3.30	-	2.29
BMO Short-Term US TIPS Index ETF	ZTIP	01/20/2021	2.34	2.04	2.34	1.23	0.36	5.60	5.54	-	5.33
BMO USD Cash Management ETF	ZUCM	09/27/2023	2.21	2.28	2.21	1.78	0.50	-	-	-	5.85
BMO Long-Term US Treasury Bond Index ETF	ZTL	02/21/2017	1.28	-2.26	1.28	-0.84	-3.73	-1.79	-3.73	-	-0.40

Preferred Shares

Performance as of April 30, 2026

Name	Ticker	Inception Date	YTD (%)	1 MO (%)	3 MO (%)	6 MO (%)	1 YR (%)	3 YR (%)	5 YR (%)	10 YR (%)	Since Inception (%)
BMO Laddered Preferred Share Index ETF (US Dollar Units)	ZPR.U	01/24/2022	0.62	-2.05	0.62	6.76	22.14	16.48	-	-	5.10
BMO Laddered Preferred Share Index ETF	ZPR	11/14/2012	1.98	-0.10	1.98	6.72	18.09	17.61	8.37	8.11	3.66
BMO US Preferred Share Index ETF (USD Units)	ZUP.U	02/03/2017	-1.72	-3.90	-1.72	-3.16	0.75	4.66	-1.13	-	2.13
BMO US Preferred Share Hedged to CAD Index ETF	ZHP	02/03/2017	-2.23	-4.12	-2.23	-4.13	-1.22	3.08	-2.22	-	1.06
BMO US Preferred Share Index ETF	ZUP	02/03/2017	-0.39	-2.00	-0.39	-3.20	-2.61	5.67	0.89	-	2.91

Asset Allocation ETFs

Performance as of April 30, 2026

Name	Ticker	Inception Date	YTD (%)	1 MO (%)	3 MO (%)	6 MO (%)	1 YR (%)	3 YR (%)	5 YR (%)	10 YR (%)	Since Inception (%)
BMO All-Equity ETF	ZEQT	01/24/2022	0.34	-4.58	0.34	3.14	20.62	18.22	-	-	12.96
BMO Monthly Income ETF (USD Units)	ZMI.U	01/24/2022	1.58	-4.16	1.58	5.28	15.83	10.26	-	-	5.40
BMO Growth ETF	ZGRO	02/12/2019	0.28	-4.06	0.28	2.49	16.53	15.14	10.06	-	10.65
BMO Growth ETF (Fixed Percentage Distribution Units)	ZGRO.T	01/23/2023	0.28	-4.06	0.28	2.49	16.53	15.14	-	-	14.47
BMO Balanced ETF	ZBAL	02/12/2019	0.21	-3.54	0.21	1.82	12.52	12.02	7.57	-	8.32
BMO Balanced ETF (T6 Series)	ZBAL.T	01/24/2022	0.21	-3.54	0.21	1.82	12.52	12.02	-	-	7.91
BMO Monthly Income ETF	ZMI	01/28/2011	2.95	-2.26	2.95	5.23	11.97	11.33	7.77	6.60	6.18
BMO Balanced ESG ETF	ZESG	01/16/2020	-1.40	-3.62	-1.40	0.21	11.61	12.12	7.61	-	7.66
BMO Conservative ETF	ZCON	02/12/2019	0.13	-3.02	0.13	1.13	8.59	8.93	5.09	-	6.00

Alpha Seeking Strategies

Performance as of April 30, 2026

Name	Ticker	Inception Date	YTD (%)	1 MO (%)	3 MO (%)	6 MO (%)	1 YR (%)	3 YR (%)	5 YR (%)	10 YR (%)	Since Inception (%)
BMO Brookfield Global Renewables Infrastructure Fund ETF Series	GRNI	03/01/2022	10.09	-1.23	10.09	13.71	27.32	10.17	-	-	7.66
BMO Global Innovators Fund Active ETF Series	BGIN	06/27/2023	2.09	-5.55	2.09	2.26	36.41	-	-	-	24.34
BMO Long Short Canadian Equity ETF	ZLSC	09/27/2023	5.08	-0.97	5.08	10.32	27.09	-	-	-	20.69
BMO SIA Focused Canadian Equity Fund ETF Series	ZFC	12/06/2018	10.77	-1.93	10.77	15.61	30.79	13.17	10.09	-	10.22
BMO Global Infrastructure Fund Active ETF Series	BGIF	06/27/2023	9.78	-1.16	9.78	9.22	19.77	-	-	-	18.55
BMO Global Dividend Opportunities Fund Active ETF Series	BGDV	09/27/2023	-2.90	-6.29	-2.90	-1.60	10.85	-	-	-	20.92
BMO Global Equity Fund Active ETF Series	BGEQ	06/27/2023	-3.74	-5.84	-3.74	-2.36	13.06	-	-	-	19.58
BMO Tactical Dividend ETF Fund	ZZZD	01/08/2019	5.83	-0.71	5.83	7.08	10.82	7.60	7.07	-	4.59
BMO U.S. All Cap Equity Fund ETF Series	ZACE	06/07/2021	-3.95	-3.34	-3.95	-3.97	13.94	20.36	-	-	12.68
BMO Global Health Care Fund Active ETF Series	BGHC	06/27/2023	-3.89	-5.89	-3.89	7.94	4.53	-	-	-	9.46
BMO Women In Leadership Fund	WOMN	03/01/2022	10.09	-1.23	10.09	13.71	27.32	10.17	-	-	7.66
BMO Sustainable Global Multi-Sector Bond Fund	ZMSB	05/23/2018	-1.43	-2.60	-1.43	-0.30	4.10	5.23	1.67	-	2.89
BMO Global Strategic Bond Fund	ZGSB	05/23/2018	-0.94	-2.03	-0.94	-0.15	4.52	6.19	1.65	-	2.95
BMO Brookfield Global Real Estate Tech Fund ETF Series	TOWR	03/01/2022	2.74	-6.64	2.74	-0.55	0.14	4.30	-	-	0.57

BMO SIA Focused North American Equity Fund ETF Series	ZFN	12/06/2018	-6.81	-6.96	-6.81	-4.60	5.57	16.40	11.04	-	10.40
BMO Global REIT Fund Active ETF Series	BGRT	06/27/2023	1.88	-5.63	1.88	-0.39	-0.58	-	-	-	6.26
BMO Core Plus Bond Fund	ZCPB	05/23/2018	0.14	-2.03	0.14	-0.19	0.80	3.68	0.53	-	1.82
BMO Long Short US Equity ETF	ZLSU	09/27/2023	-1.82	-0.57	-1.82	-4.82	2.97	-	-	-	15.81

Disclaimers:

This report is for information purposes only. The information contained herein is not, and should not be construed as investment, tax or legal advice to any party. Particular investments and/or trading strategies should be evaluated, and professional advice should be obtained with respect to any circumstance. The viewpoints expressed by the authors represents their assessment of the markets at the time of publication. Those views are subject to change without notice at any time. Past performance is no guarantee of future results.

Commissions, management fees and expenses all may be associated with investments in BMO ETFs and ETF Series units of the BMO Mutual Funds. Please read the ETF facts or prospectus of the relevant BMO ETF or ETF Series of BMO Mutual Fund before investing. The indicated rates of return are the historical compounded total returns including changes in share or unit value and the reinvestment of all dividends or distributions and do not take into account the sales, redemption, distribution, optional charges or income tax payable by the unitholder that would have reduced returns. BMO ETFs and ETF Series units of the BMO Mutual Funds are not guaranteed, their values change frequently and past performance may not be repeated.

For a summary of the risks of an investment in the BMO ETFs or ETF Series units of the BMO Mutual Funds, please see the specific risks set out in the relevant prospectus. BMO ETFs and ETF Series units of the BMO Mutual Funds trade like stocks, fluctuate in market value and may trade at a discount to their net asset value, which may increase the risk of loss. Distributions are not guaranteed and are subject to change and/or elimination.

BMO ETFs are managed by BMO Asset Management Inc., an investment fund manager, a portfolio manager, and a separate legal entity from Bank of Montreal. The BMO Mutual Funds are managed by BMO Investments Inc., an investment fund manager and a separate legal entity from Bank of Montreal.

BMO Global Asset Management is a brand name under which BMO Asset Management Inc. and BMO Investments Inc. operate.

"BMO (M-bar roundel symbol)" is a registered trademark of Bank of Montreal, used under licence.

The ETF referred to herein is not sponsored, endorsed, or promoted by MSCI and MSCI bears no liability with respect to the ETF or any index on which such ETF is based. The ETF's prospectus contains a more detailed description of the limited relationship MSCI has with the Manager and any related ETF.

Nasdaq® is a registered trademark of Nasdaq, Inc. (which with its affiliates is referred to as the "Corporations") and is licensed for use by the BMO Asset Management Inc., as manager, for BMO Nasdaq 100 Equity Index ETF (ZNQ). The ETF has not been passed on by the Corporations as to their legality or suitability. The ETF is not issued, endorsed, sold, or promoted by the Corporations. The Corporations make no warranties and bear no liability with respect to the ETF.

The Index is a product of S&P Dow Jones Indices LLC or its affiliates ("SPDJ"), and has been licensed for use by the Manager. S&P®, S&P 500®, US 500, The 500, iBoxx®, iTraxx® and CDX® are trademarks of S&P Global, Inc. or its affiliates ("S&P") and Dow Jones® is a registered trademark of Dow Jones Trademark Holdings LLC ("Dow Jones"), and these trademarks have been licensed for use by SPDJ and sublicensed for certain purposes by the Manager. The ETF is not sponsored, endorsed, sold or promoted by SPDJ, Dow Jones, S&P, their respective affiliates, and none of such parties make any representation regarding the advisability of investing in such product(s) nor do they have any liability for any errors, omissions, or interruptions of the Index.

This report may contain links to other sites that BMO Global Asset Management does not own or operate. Any content from or links to a third-party website are not reviewed or endorsed by us. You use any external websites or third-party content at your own risk. Accordingly, we disclaim any responsibility for them.